



APTUS
FASTENER SYSTEMS
innovations in fastenings and fixings

Fastener Solutions for Modern Methods of Construction



Finding the right solution



Volumetric modular



Glulam technology



Roof cassette technology

Aptus Fastener Systems have developed the most comprehensive range of innovative fastening solutions for and modern methods of offsite construction.

Whether you are constructing within panelised methods - timber frame and structural insulated panels (SIPS), volumetric construction techniques, cross-laminated (x-lam), and glue laminated (glulam) technology or hybrid applications, Aptus Fastener Systems will have a solution in our range that suits your needs.

Our comprehensive range of products and services has been developed with modern sustainable building technologies in mind.

We have recognised that as new construction methods emerge, our range of fasteners must keep pace, so we have developed a specialist range of ETA approved innovative fasteners from market leading manufacturers across Europe and beyond.

We stock and distribute a broad range of industrial fasteners and associated components to meet the structural design parameters for timber buildings under Eurocode 5.

We supply our product range with an extraordinary level of service at every point of contact with our customers, and provide a high level of technical support to ensure that the right fastening solution is specified in the right application using the correct equipment.

Always working alongside your own engineers our technical support extends to installation guidelines, thread geometry, fastener surface finishes and design guidance.

Working with our supply partners, our research and engineering capabilities support both the manufacturer offsite and the professional onsite.

We like to work with clients on development projects, influence specification, and ensuring that the right fastener solution is found for that specific application, often making a difference to the overall assembly costs and lifespan of the finished building.

Our fastener experts consider production line assembly and site assembly methods and can always find the right fastener solution, taking into account cost and performance.



Content:

Wood Construction Screws



Heco Topix®
The wood screw for the professional, approved for solid wood, CLT, Glulam & LVL 6



Heco Topix® Flange Head
Timber to timber and steel to timber connections 7



Heco Topix® Flange Head XL
Higher load transmission due to the larger head size 8



Heco Topix® Combined Hex Head
Versatile screw for construction and transport 9



Heco Topix® Stainless Steel
Service class 3 applications in structural timber and solar installation 10



Prostruct® Flange Head
ETA approved structural screws, suitable for SIPS 11



Timberfix® Plus Multi-ply Structural Timber Screw
Outdoor coating for landscaping use 12

Reinforcement Screws



Heco Topix® Full Thread
Reinforcement and connections requiring high loads 13



Heco Topix® Combi Connect
The pulling power screw for the highest loads 14



Heco® WR
High load reinforcement screw 15



Heco® WB
Effective solution for lateral tensile reinforcement 16

Content continued:

Building Envelope Screws



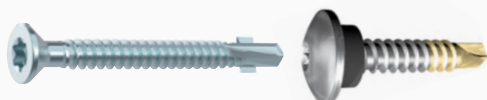
Heco® Therm
Secures insulation to rafters and facades

17



Heco® Unix Top Cladding Screw
The unique cladding screw with contraction effect

18



Heco® SC-S
Timber to steel and panel to steel outdoor applications

19



Multi Monti® - TC - Timber Connect
Unique combination of timber and concrete screw for sole plates

20



Multi Monti® Stainless Steel
The innovative screw anchor for concrete and masonry, now in stainless steel

21

Connectors and Brackets



Pitzl® HVP Connector
Wide range of high quality dovetail connectors

22



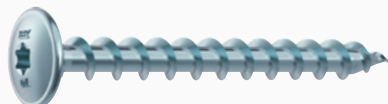
Heco Topix® Connector Screws
Approved for use within the Pitzl system

23



Pitzl® Post Bases
Easy to use and versatile

24



Heco Topix® Post Screws
Permanent and temporary fixings in all types of wood products

25



Heco® WS
Secures multiple shear steel-timber joints

26



Prostruct® Structural Brackets
For timber to timber and timber to concrete connections

27



Pitzl® Advanced Connection Systems
Securing to insulated walls, acoustic protection and torsional stiffness

28

Onsite/ Offsite



Pitzl® Power Clamp
Multiple use lifting system for offsite manufacture

29



Rapid T Lift
Fast and easy lifting of timber members both inside and out

30



Pitzl® Wall Prop and Beam Puller
Onsite support and positioning

31



Multi Monti Plus® SSK
The reusable screw anchor for the temporary fixing of push-pull props in young concrete

32

Services



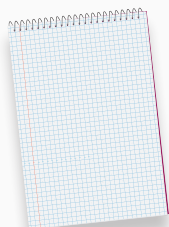
Heco® Connection Design Support
Calculation software HCS

33



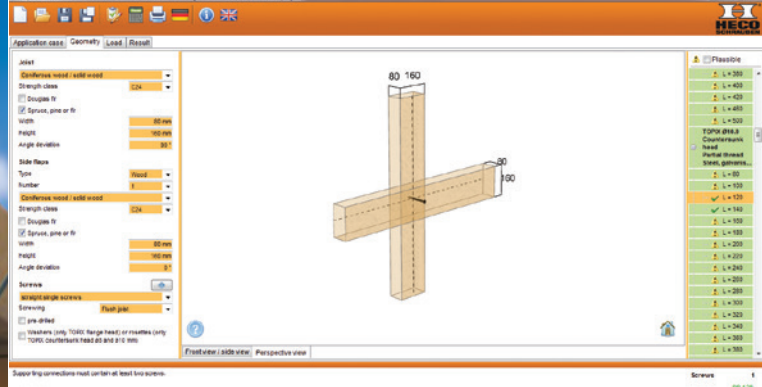
Aptus Site Services
150 years of combined experience to support your business

34



Notes

35

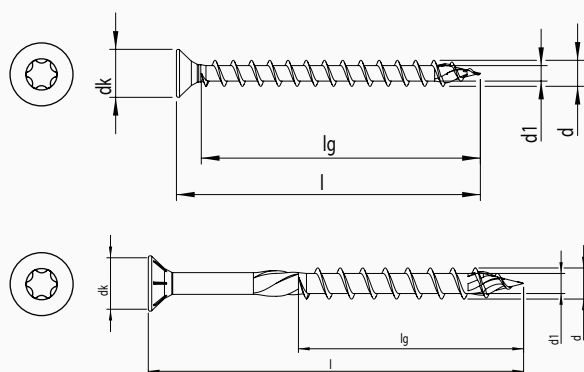


Heco Topix®

The wood screw for the professional, approved for solid wood, CLT, Glulam & LVL

PRODUCT INFORMATION

- Revolutionary point and shank design
- ETA approved, EC5 compliant
- No predrilling in most hardwoods
- Faster driving
- Reduced risk of splitting the wood
- Lower driving torque
- Calculation software available for connection detail
- Carbon steel and stainless steel available, REACH and RoHS compliant
- Part and full thread available



Diameter (d)	Length (l) Range: from - to	Drive	Head Diameter (dk)	ETA
5mm	30mm - 100mm	T25	9.6mm	•
6mm	40mm - 300mm	T25	11.6mm	•
8mm	80mm - 500mm	T40	14.8mm	•
10mm	80mm - 500mm	T40	18.5mm	•

Manufactured in Germany, stocked and serviced in the UK for over 20 years



Countersunk head with milling ribs
ensure that the head is clearly countersunk

Higher thread pitch
for faster driving

Shank ribs
permit easy, stress-free driving

Tip with milling ribs
reduces the risk of splitting the wood



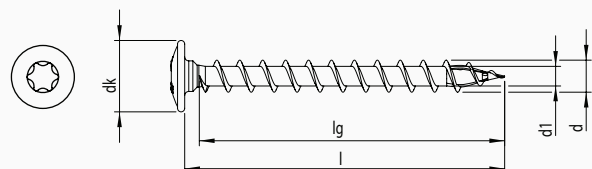


Heco Topix® - Flange Head

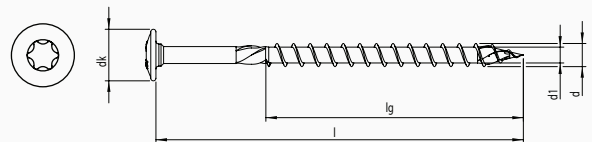
Timber to timber and steel to timber connections

PRODUCT INFORMATION

- Higher load transmission due to the increased clamping surface of the head
- ETA approved, EC5 compliant
- No predrilling in most hardwoods
- Calculation software available for connection detail
- Carbon steel and stainless steel available, REACH and RoHS compliant
- Part and full thread available



Diameter (d)	Length (l) Range: from - to	Drive	Head Diameter (dk)	ETA
6mm	40mm - 80mm	T25	14mm	•
8mm	80mm - 120mm	T40	18mm	•
10mm	80mm - 120mm	T40	22.5mm	•



Diameter (d)	Length (l) Range: from - to	Drive	Head Diameter (dk)	ETA
6mm	100mm - 300mm	T25	14mm	•
8mm	140mm - 500mm	T40	18mm	•
10mm	140mm - 400mm	T40	22.5mm	•

Manufactured in Germany,
stocked and serviced in
the UK for over 20 years



Flange head

higher load transmission due to the increased clamping surface of the head

Shank ribs
permit easy, stress-free driving

Optimal thread pitch
for faster driving

Tip with milling ribs
reduces the risk of splitting the wood



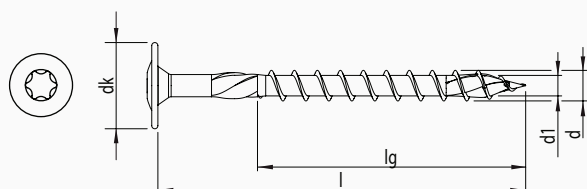


Heco Topix[®] Flange Head XL

Self-tapping screws for connections in wood and man-made timber

PRODUCT INFORMATION

- Higher load transmission due to the increased clamping surface of the head
- Quick and easy to use
- Friction free and easy insertion
- Reduced splitting tendency
- CE-marking based on ETA-approval
- Larger head diameter (22,5 mm) for more contact pressure and higher load transmission



Diameter (d)	Length (l) Range: from - to	Drive	Head Diameter (dk)	ETA
8mm	160mm - 400mm	T40	22.5mm	•

Manufactured in Germany,
stocked and serviced in
the UK for over 20 years



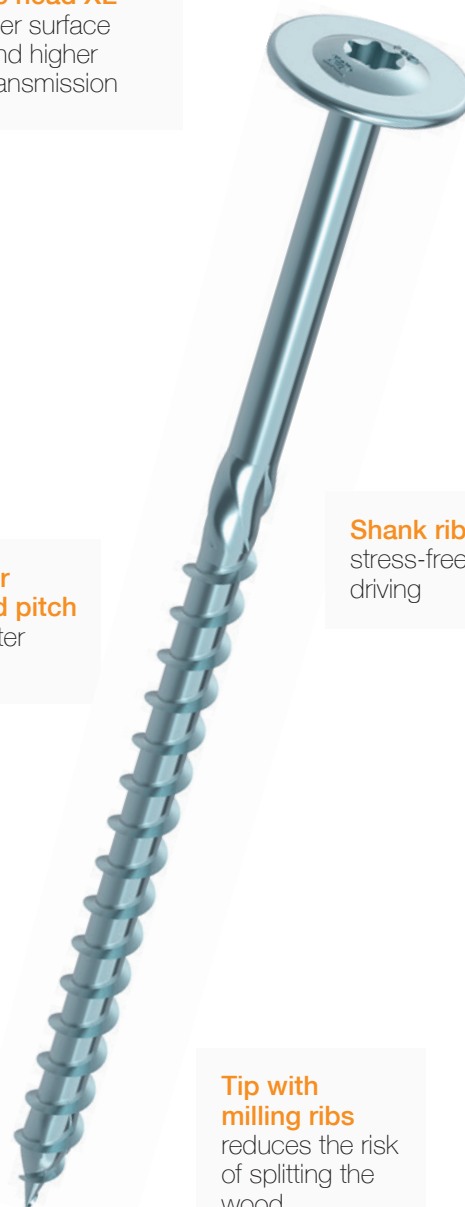
Flange head XL

for larger surface area and higher load transmission

Higher thread pitch
for faster driving

Shank ribs
stress-free driving

Tip with milling ribs
reduces the risk of splitting the wood



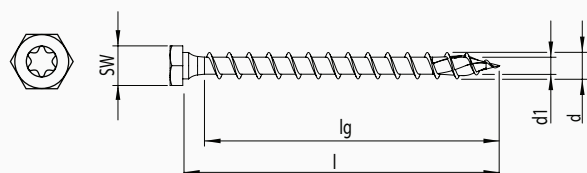


Heco[®] Topix Combined Hex Head

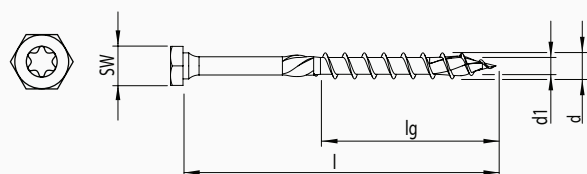
Versatile screw for construction and transport

PRODUCT INFORMATION

- Suitable for use as a transport anchor with compatible systems
- Perfect for securing tilt props and wall supports
- No predrilling required
- Faster driving
- Reduced risk of splitting the wood
- Lower driving torque
- High cost effectiveness



Diameter (d)	Length (l) Range: from - to	Drive	Head Diameter (dk)	ETA
8mm	50mm - 100mm	T40/SW13	13mm	•
10mm	60mm - 100mm	T40/SW15	15mm	•



Diameter (d)	Length (l) Range: from - to	Drive	Head Diameter (dk)	ETA
8mm	120mm - 400mm	T40/SW13	13mm	•
10mm	120mm - 400mm	T40/SW15	15mm	•

Combi hex head
for versatility and a secure drive

Higher thread pitch
for faster driving

Shank ribs
permit easy, stress-free driving (only with part threaded)

Tip with milling ribs
reduces the risk of splitting the wood

Stocked & serviced in the UK



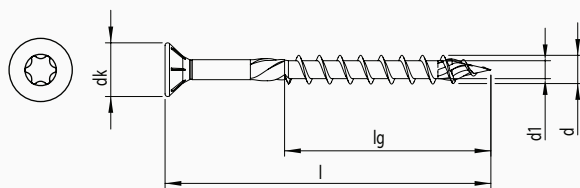


Heco Topix[®] Stainless Steel

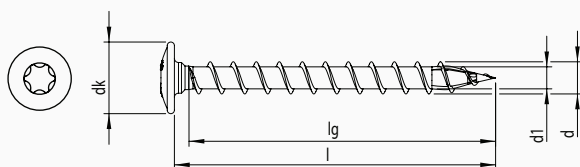
Service class 3 applications and solar panel installation

PRODUCT INFORMATION

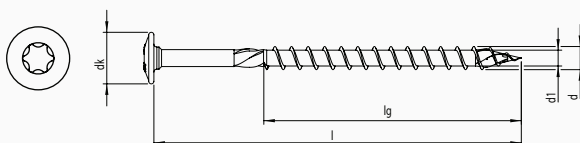
- Stainless steel A2 1.4567, corrosion resistance class II
- Used for applications of utility class 3, outdoor (Eurocode 5)



Diameter (d)	Length (l) Range: from - to	Drive	Head Diameter (dk)	ETA
4mm	30mm - 60mm	T25	7.9mm	•
5mm	35mm - 100mm	T25	9.6mm	•
6mm	50mm - 160mm	T25	11.6mm	•
8mm	80mm - 400mm	T40	14.8mm	•



Diameter (d)	Length (l) Range: from - to	Drive	Head Diameter (dk)	ETA
6mm	40mm - 80mm	T25	14mm	•
8mm	40mm - 120mm	T40	18mm	•



Diameter (d)	Length (l) Range: from - to	Drive	Head Diameter (dk)	ETA
6mm	100mm - 120mm	T25	14mm	•
8mm	140mm - 300mm	T40	18mm	•

Manufactured in Germany,
stocked and serviced in
the UK for over 20 years



Countersunk head with milling ribs

ensure that the head
is clearly countersunk

Flange Head

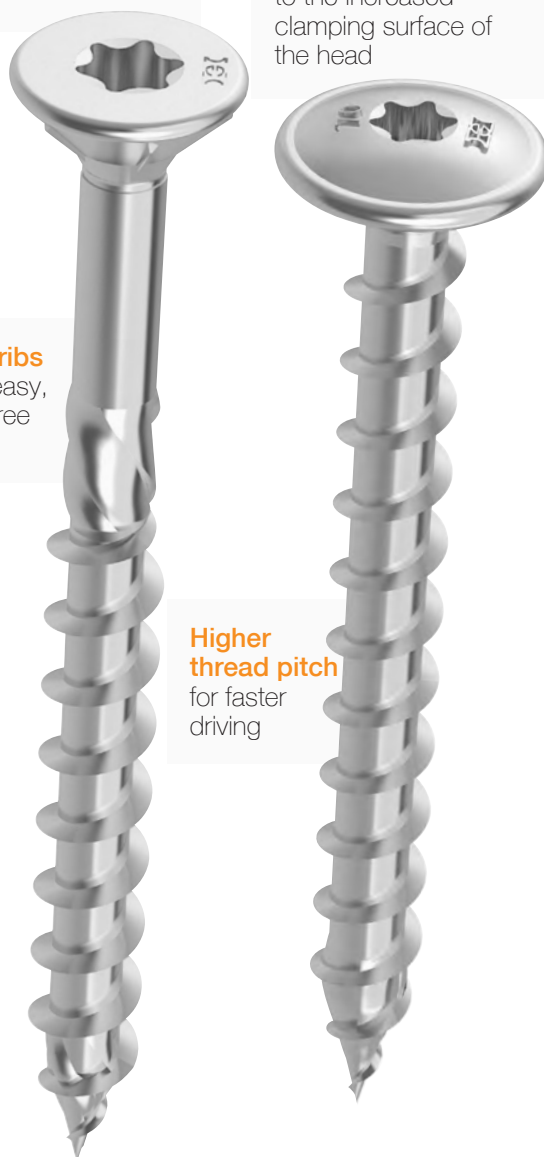
higher load
transmission due
to the increased
clamping surface of
the head

Shank ribs

permit easy,
stress-free
driving

Higher thread pitch

for faster
driving





Prostruct® Flange Head

ETA approved structural screws, suitable for SIPS

PRODUCT INFORMATION

- ETA approval pending from German test house, CE marked
- Complies with RoHS & REACH
- Special steel moves with the wood
- Special thread geometry drives in quicker & gives better pull out resistance
- Large diameter head improves resistance to head pull through
- Zinc plated 500hrs salt spray coating - service class 1 & 2 of Eurocode 5
- T+ head marking & screw length on head
- Driver bit in every box

Diameter (d)	Length (l) Range: from - to	Drive	Head Diameter (dk)	ETA
6mm	60mm - 140mm	T30	15mm	•
8mm	65mm - 300mm	T40	22mm	•

*Diameters M6 – M14 available in lengths up to 1500mm & various head styles to special order.

Stocked & serviced in the UK

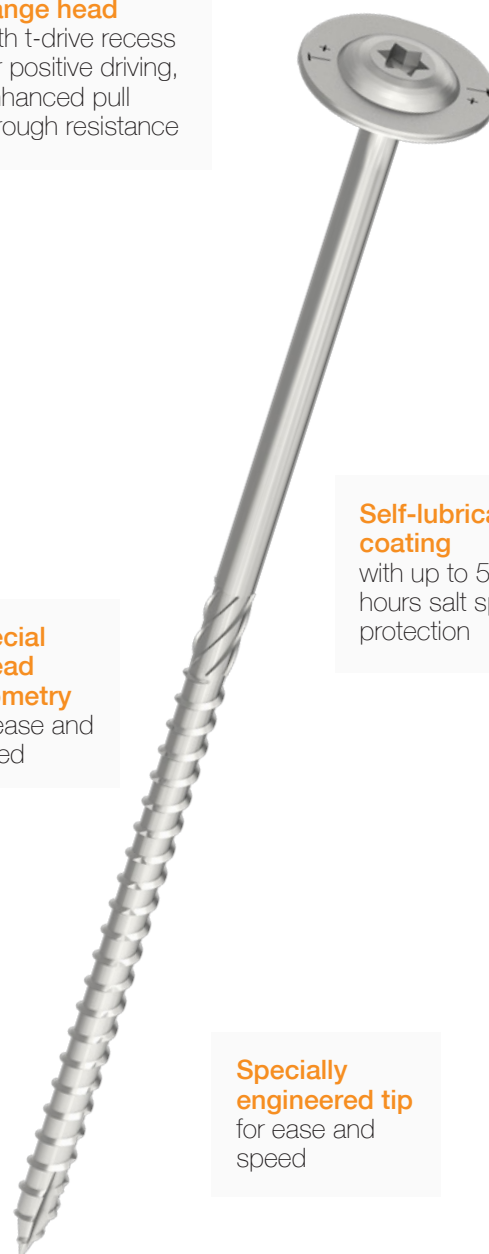


Reinforced flange head
with t-drive recess for positive driving, enhanced pull through resistance

Special thread geometry
for ease and speed

Self-lubricating coating
with up to 500 hours salt spray protection

Specially engineered tip
for ease and speed





Timberfix® Plus Multi-ply structural timber screw

Outdoor coating offers use in landscaping and outdoor non-structural applications

PRODUCT INFORMATION

- Fastening of multiple web and metal I-Joists
- Endorsed by MiTek Technology and Wolf Systems for connecting two ply chords

6.5 x 115mm	72mm chords
6.5 x 125mm	72mm chords
6.5 x 150mm	97mm chords
6.5 x 200mm	122mm chords
6.5 x 250mm	147mm chords

- Meets the requirements of service class 1, 2 & 3 according to EN1995-1-1
- CE compliant in accordance with EN14592:2008+A1:2012 as certified by BM TRADA
- High quality boron steel

Diameter (d)	Length (l) Range: from - to	Drive	Head Diameter (dk)	CE
6.5mm	65mm - 250mm	Hex 8mm	12mm	•

Reinforced hex flange head
secure drive, driver socket included

Special thread geometry
for ease and speed

Advanced self lubricating coating
with up to 1000 hours resistance to salt spray tests

Cut point
helps drive the screw into tougher timbers

Stocked & serviced in the UK



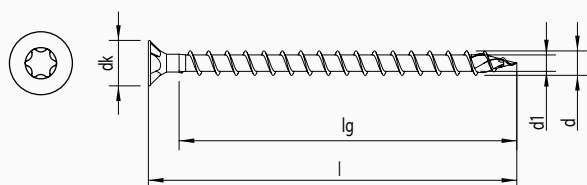


Heco Topix® Full Threaded Screws

The wood screw for connections and reinforcements in structural timber requiring high loads

PRODUCT INFORMATION

- Countersunk head with milling grooves; no damage to the metalwork
- Perfectly coordinated HECO-Drive with positive fit
- Transfer of high tensile and compressive loads via the full thread
- Reduced edge and centre distances
- Approved and monitored product



Diameter (d)	Length (l) Range: from - to	Drive	Head Diameter (dk)	ETA
8mm	120mm - 380mm	T40	14.8mm	•
10mm	120mm - 380mm	T40	18.5mm	•

Countersunk head with milling grooves and HECO-Drive recess

for flush countersinking of the head in timber and steel connectors

Optimised full-threaded design up to the head

for transmission of high tensile and compressive loads

Reinforcing washers available



HECO-TOPIX®-tip with milling ribs

reduces the risk of splitting the wood during insertion

Manufactured in Germany, stocked and serviced in the UK for over 20 years



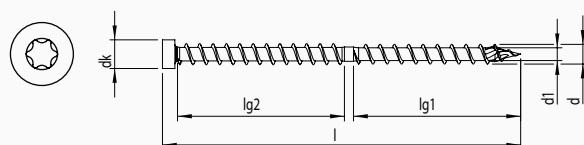
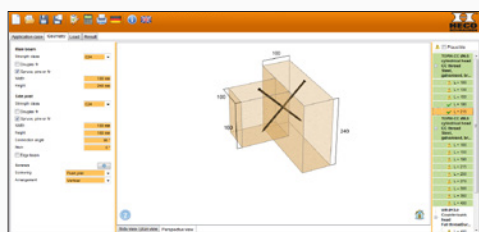


Heco Topix[®] Combi Connect

The pulling power screw for high loads

PRODUCT INFORMATION

- Transfer of high tensile and compressive loads via the double thread
- Pulls the components together during the screwing process
- For universal use in new constructions and restorations
- Endorsed by MiTek Technology for connecting 3 ply web joists
- Calculation document via HECO[®] HCS or calculation service
- Approved and monitored product
- Designed to be driven under the surface of the timber without load reduction and in doing so provides an improved fire resistance



Diameter (d)	Length (l) Range: from - to	Drive	Head Diameter (dk)	ETA
6.5mm	100mm - 215mm	T40	9mm	•
8.5mm	100mm - 400mm	T40	12mm	•

Manufactured in Germany,
stocked and serviced in
the UK for over 20 years

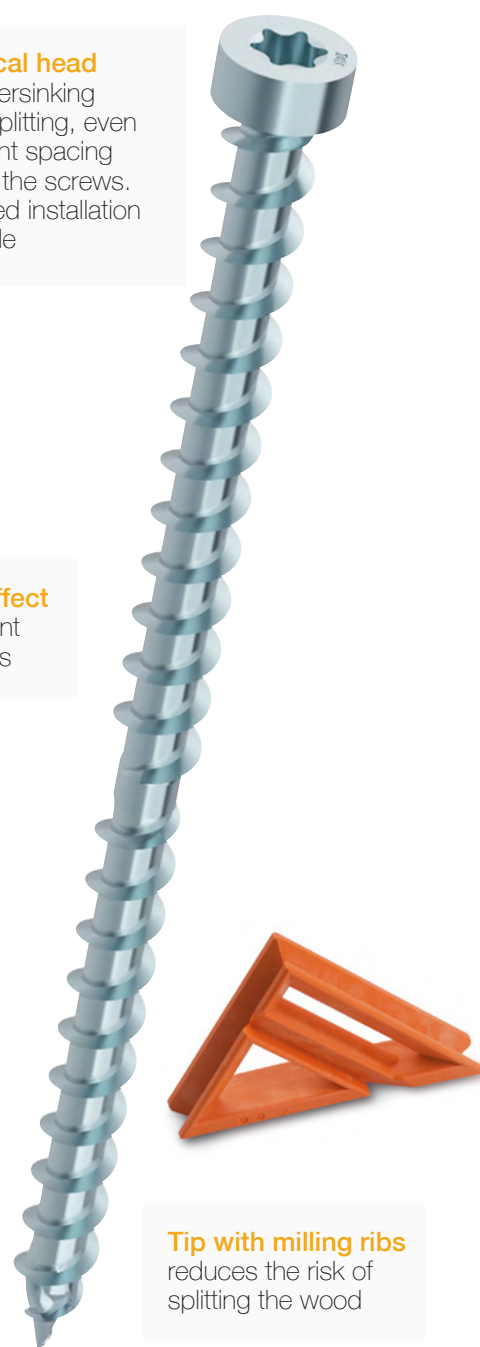


Cylindrical head

for countersinking
without splitting, even
with a tight spacing
between the screws.
Concealed installation
is possible

Clamping effect

due to different
thread pitches



Tip with milling ribs

reduces the risk of
splitting the wood

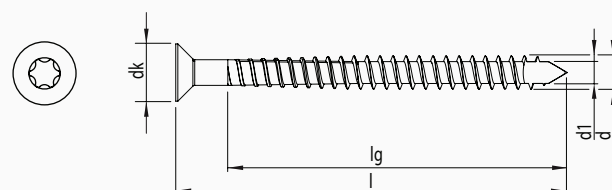


Heco[®] WR

More power in structural timberwork and reinforcement applications

PRODUCT INFORMATION

- ☛ Very high performance
- ☛ Insertion parallel to the grain possible
- ☛ No decline of load bearing capacity from 90° to 45° relative to the grain
- ☛ Installation without pre-drilling
- ☛ Low splitting tendency: small edge and intervening spacing
- ☛ High corrosion resistance (Durocoat)
- ☛ CE-marking based on ETA-12/0062



Diameter (d)	Length (l) Range: from - to	Drive	Head Diameter (dk)	ETA
13mm	400mm - 1000mm	T50	22mm	•

Manufactured in Germany,
stocked and serviced in
the UK for over 20 years



Countersunk head

Full threaded

Surface Durocoat

Half tip





Heco[®] WB

Simple solution for lateral tensile reinforcements

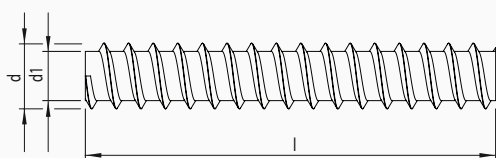
PRODUCT INFORMATION

- ⦿ Lateral tensile reinforcement without glueing
- ⦿ Easy and reliable calculation
- ⦿ High tensile strength of 800 N/mm²
- ⦿ Insertion sleeve for countersinking
- ⦿ Diameters [mm]: 16.0, 20.0
- ⦿ Length [mm]: 3000, individually cut to length
- ⦿ Approved according to German Approval Z-9.1-777

Headless threaded rod

Thread geometry DIN 7998

Surface bright zinc plated, steel, hardened



Length (l)	Diameter (d)
3000mm	16mm
3000mm	20mm

Manufactured in Germany, stocked and serviced in the UK for over 20 years



Insertion Tools



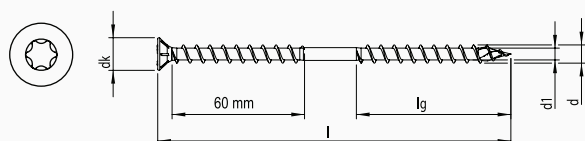


Heco[®] Therm

For on rafter and façade insulation

PRODUCT INFORMATION

- Suitable for any type of insulation material
- Compressive loads are transferred directly into the rafters
- Just one screw length is required for the insulated roof area
- Calculation document via HECO[®] HCS or calculation service
- Suitable for any type of soft insulation material with a compressive strength less than 50 kPa (0.05N/mm²)
- Supports suction loads



Diameter (d)	Length (l) Range: from - to	Drive	Head Diameter (dk)	ETA
8mm	160 - 500mm	T40	14.8mm	•
10mm	260 - 460mm	T40	18.5mm	•

Manufactured in Germany,
stocked and serviced in
the UK for over 20 years



Secondary thread

Optimal
thread pitch
for faster
driving

Surface bright
zinc plated,
steel, hardened

Tip with
milling ribs
reduces the risk
of splitting the
wood





Heco® UNIX-Top Cladding Screw

The unique cladding screw with contraction effect

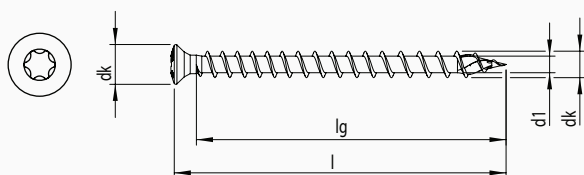
PRODUCT INFORMATION

- Small raised head for a neat finish and less chance of trapped moisture
- Mounting and fixation of cladding with one screw
- Gapless joining of cladding
- Permanent fixation and increased pull out values thanks to the HECO-UNIX full thread
- Reduced splitting effect due to the HECO-TOPIX® tip with milling ribs
- Screw types in stainless steel for permanent fixations according to utility class 3
- CE-marking

Small raised
countersunk head

Thread beneath
the head

Full thread with
variable thread
pitch



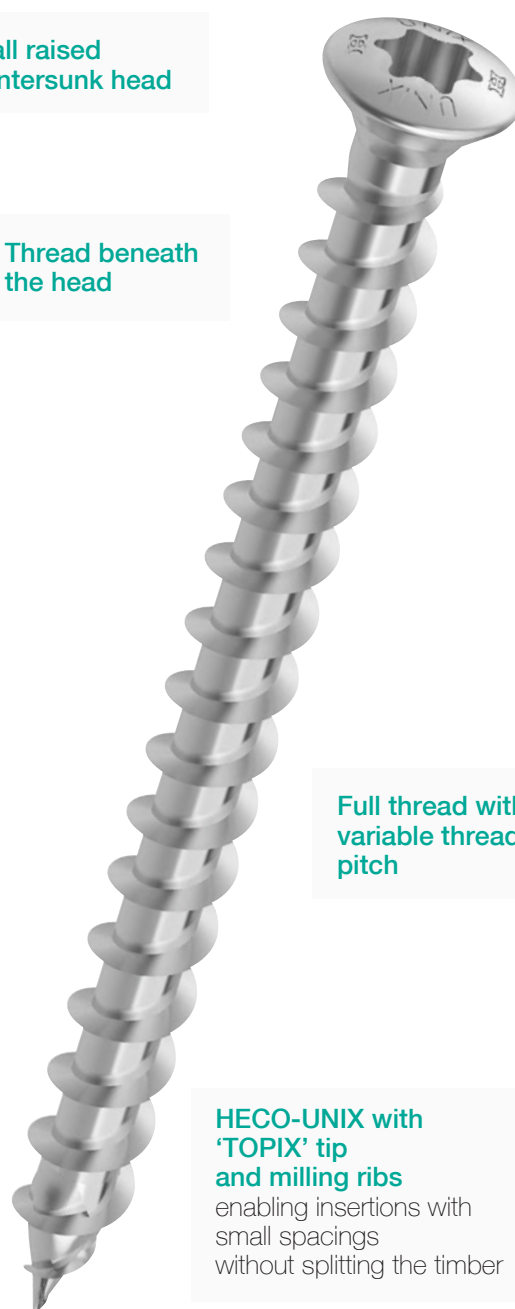
Diameter (d)	Length (l) Range: from - to	Drive	Head Diameter (dk)	ETA
4.5mm	50mm - 80mm	T20	7.2mm	•
5mm	40mm - 80mm	T20	7.2mm	•

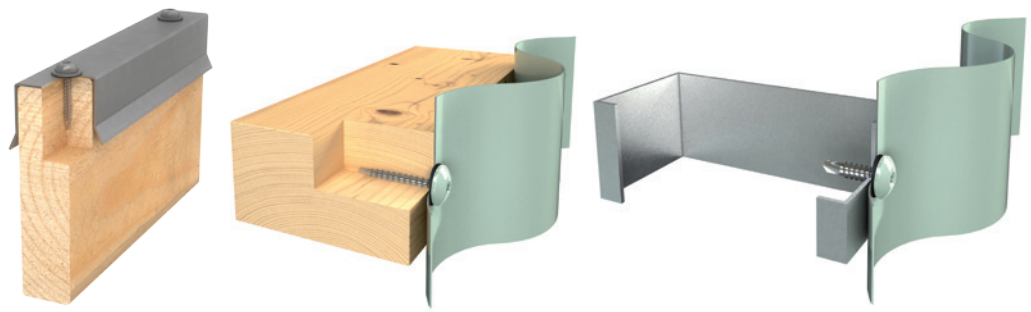
Manufactured in Germany,
stocked and serviced in
the UK for over 20 years



Video

HECO-UNIX with
'TOPIX' tip
and milling ribs
enabling insertions with
small spacings
without splitting the timber





Heco® SC-S

Stainless steel fixings for cladding and facades to timber and steel

PRODUCT INFORMATION

- Fixing timber to steel and aluminium substructures in one step
- Stainless steel offers high corrosion resistance and prevents staining of the façade
- Hardened, zinc-plated drill point
- Increased diameter of the timber bore hole: reduced problems through timber swelling and shrinking
- Countersunk head anchorage in hard and softwoods

Diameter (d)	Length (l) Range: from - to	Drive	Head Diameter (dk)
4.8mm	42mm - 72mm	PH2	10mm
5.5mm	55mm - 75mm	T30	10mm

- A2 stainless bimetallic screw for securing trim and sheets to steel and timber
- A4 stainless available
- Head can be painted in over 200 RAL colours (Qualicoat certified powder)
- Drilling, tapping, fastening and sealing in one operation

Diameter (d)	Length (l) Range:	Drive	Head Diameter (dk)	ETA
4.8mm	19mm, 23mm, 35mm, 60mm	T20	13.8mm	•
5.5mm	25mm, 30mm, 42mm, 56mm	T20	13.8mm	•

Countersunk head



Video



Stainless steel A2
bright zinc plated

Winged self drilling tip (carbon steel)



Stocked & serviced
in the UK



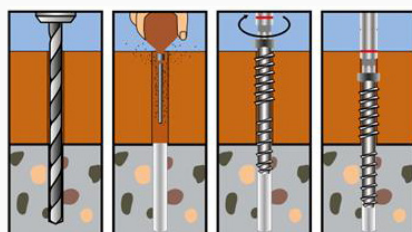


Multi Monti[®] - Timber Connect (TC)

Unique combination of concrete screw and timber screw

PRODUCT INFORMATION

- Designed to secure timber beams to concrete walls and floors
- Through fixing saves time
- High shear loads may reduce the number of fixing points, saving time and money
- Timber connect can be embedded using the setting tool in a range of timber thicknesses with no loss of loading
- No plugs required, taps directly into substrate



Unique combination
of timber thread
and concrete
thread

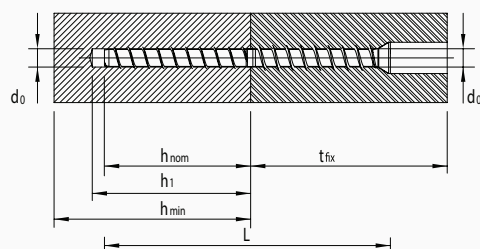


Insertion Tools



New toothed functional tip

reduce of abrasion due to the increased outer thread diameter and the enhanced serration



Diameter (d)	Length (l)	Drill Diameter	Head Diameter (dk)	Drive	Fixture Thickness
7.5mm	100mm	6mm	10mm	T30	40mm-140mm
10mm	130mm	8mm	16mm	T45	60mm-200mm
12mm	160mm	10mm	17mm	T50	80mm-300mm

Manufactured in Germany,
stocked and serviced in
the UK for over 20 years



Video

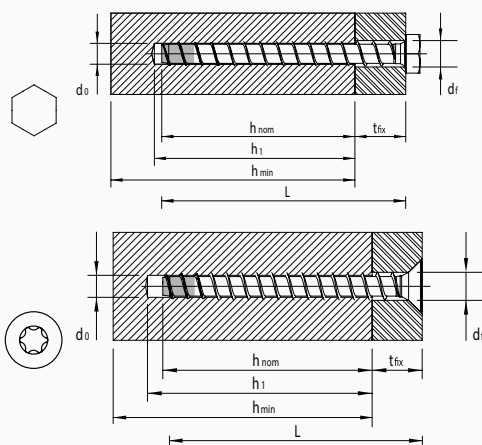


Multi Monti[®] Stainless Steel

The innovative screw anchor for concrete and masonry

PRODUCT INFORMATION

- Fast and easy mounting, no spreading effect, therefore small spacing and edge distances possible
- Use of power tools is allowed as no tightening torque is required. Safe handling, hidden fixation errors are not possible
- Available in stainless steel A5 1.4571 and in stainless steel (SS) A4 1.4401. SS HCR 1.4529 on request
- Approved and monitored product for cracked and non-cracked concrete
- Perfect for professional installation of balconies and balustrades
- No plugs required, taps directly into substrate



Diameter (d)	Length (l) Range: from - to **	Drive	Head Diameter (dk)	Drill Diameter	ETA
Hex 7.5mm	50mm - 75mm	Hex	SW13	6mm	75mm only
Hex 10mm	85mm - 95mm	Hex	SW16	8mm	•
Hex 12mm	100mm - 120mm	Hex	SW18	10mm	•
Countersunk 7.5mm	75mm - 115mm	T-30	13.6mm	6mm	•
Pan 7.5mm	75mm - 115mm	T-30	13.6mm	6mm	•

**carbon steel tip not included in load calculations



Head-marking
for easy identification
of the anchor

Concrete thread
for interlocking
fixations



**Phosphated
functional tip**
ensuring a
reliable undercut
of the concrete



Pitzl® Connectors Heavy-duty HVP

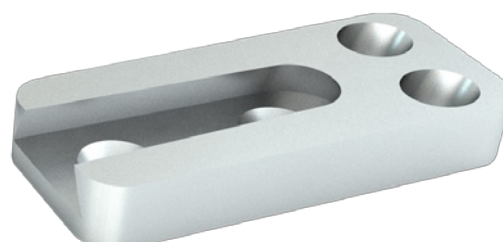
HVP – Two part dovetail connection system

PRODUCT INFORMATION

- ☉ The HVP connector - the solution for connections from 3 up to 600 kN.
- ☉ User friendly design software available on request
- ☉ Uplift prevention optionally available (standard on Heavy Duty HVP)
- ☉ End grain to end grain connections are possible
- ☉ Double sided header connection possible with alternated plates
- ☉ Certified for inclined and offset connections
- ☉ Fire rated up to 60min
- ☉ Timber/timber, timber/steel and timber/concrete versions available
- ☉ Design software available, can be secured with HECO full thread screws
- ☉ Full range and catalogue available on request

Anodised aluminium

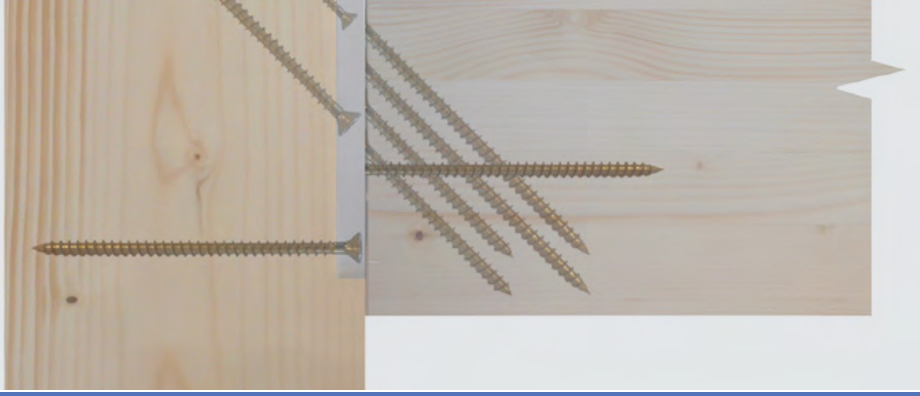
gives a antifriction surface which is inert to acidic timbers



Connectors HVP			
Width	Height	Material Thickness	Characteristic Load Capacity
25mm	40mm - 100mm	12mm	2.42kN - 15.1kN
40mm	70mm - 150mm	12mm	7.25kN - 30.2kN
Characteristic Load Capacity with HECO 4.5 dia fully threaded screws			
60mm	100mm 140mm	12mm	19.6kN - 103.3kN
Characteristic Load Capacity with HECO 5.0 dia. Fully threaded screws			
Connectors Heavy Duty HVP			
120mm	200mm - 600mm	20mm	49.8kN - 307.8kN
140mm	400mm - 600mm	20mm	199.1kN - 430.9kN
Characteristic Load Capacity with HECO 8.0 dia fully threaded screws			
Connectors Double HVP			
120mm	100mm - 140mm	12mm	39.2kN - 103.3kN
160mm	180mm - 220mm	12mm	94.2kN - 206.7kN
Characteristic Load Capacity with HECO 5.0 dia fully threaded screws			
Connectors Heavy Duty Double HVP			
240mm	200mm - 600mm	20mm	99.5kN - 615.6kN
Characteristic Load Capacity with HECO 8.0 dia fully threaded screws			



ETA-15/0187

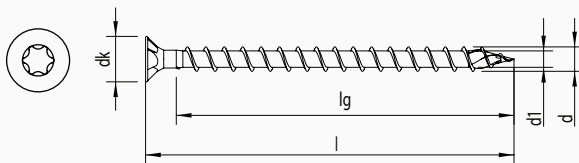


Heco Topix[®] Connector Screws

For wood connectors

PRODUCT INFORMATION

- Thread lengths designed to optimise the load transfer within the connector
- Reduced edge and centre distances
- Component of the **Pitzl** Calculation Software
- Countersunk head with milling grooves; no damage to the fitting surface
- Various full threaded applications are possible
- Support reinforcements
- CE-approved according ETA-11/0284



Head Diameter (d)	Length (l) Range: from - to	Drive	Head Diameter (dk)	ETA
8mm	120mm - 180mm	T40	14.8mm	•
10mm	120mm - 160mm	T40	18.5mm	•

Countersunk head
with milling grooves

Thicker shank
permit easy,
stress-free
driving

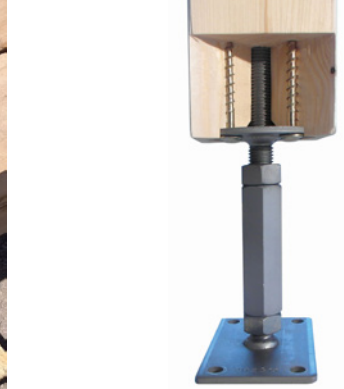
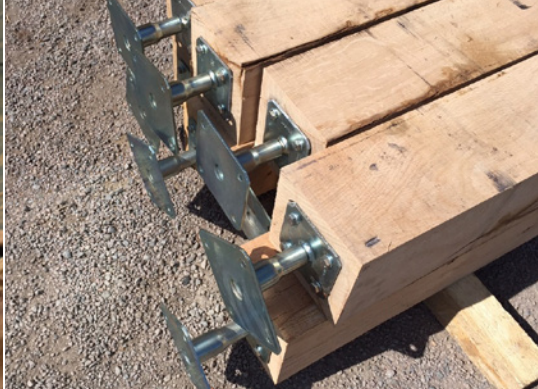
**Optimised
full threaded
design**

**Tip with
milling ribs**
reduces the risk
of splitting the
wood



Manufactured in Germany
stocked and serviced in
the UK for over 20 years





Pitzl® Post Bases

Left and right threaded

PRODUCT INFORMATION

- ⦿ Threads of 20 to 30 mm and the most varied plate sizes with 6 to 15 mm material thickness
- ⦿ Lift-off and lateral impacts can be counteracted with a straight screw connection into the cross-grained wood
- ⦿ Use of additional lock nuts increases the rigidity of the connection
- ⦿ Left and right threaded
- ⦿ Post bases of the right/left-threaded system are still height-adjustable when mounted and under heavy load
- ⦿ ZINiP coating is certified for service class 3 including high humidity and coastal locations
- ⦿ ETA approved with design value loads of up to 25 tons
- ⦿ Full range details available on request



Art Nr	10900.0000
Upper plate (mm)	100 x 100 x 6
Lower plate (mm)	100 x 100 x 6
Upper thread (mm)	M20 x 55
Lower thread (mm)	M20 x 55
Adjustment range	122mm - 182mm

Art Nr	10920.11000
Upper plate (mm)	100 x 100 x 6
Lower plate (mm)	160 x 100 x 6
Upper thread (mm)	M24 x 65
Lower thread (mm)	M24 x 90
Adjustment range	167mm - 232mm

Stocked & serviced in the UK



ETA-11/0295 ETA-10/0413

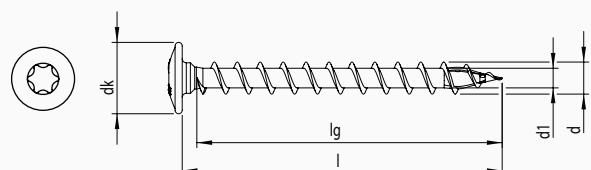


Heco Topix® Post Screws

Self-tapping screws for connections in wood and man-made timber

PRODUCT INFORMATION

- For fastening of timber posts on to steel base plates, post supporters and rammed base studs
- Securing temporary props during construction
- Reinforced shaft under the head centrally locates in the fixture
- Range of various diameters for different sizes of predrilled holes
- Quick mounting without predrilling
- High-Protect coating (HP) against corrosion (prevention of red rust up to 720h under salt spray testing according to DIN EN ISO 9227 NSS/ DIN 50021 SS)
- CE-approved according ETA-11/0284



Diameter (d)	Length (l) Range: from - to	Drive	Head Diameter (dk)	ETA
6mm	40mm - 60mm	T25	14mm	•
8mm	40mm - 60mm	T25	18mm	•

Manufactured in Germany,
stocked and serviced in
the UK for over 20 years

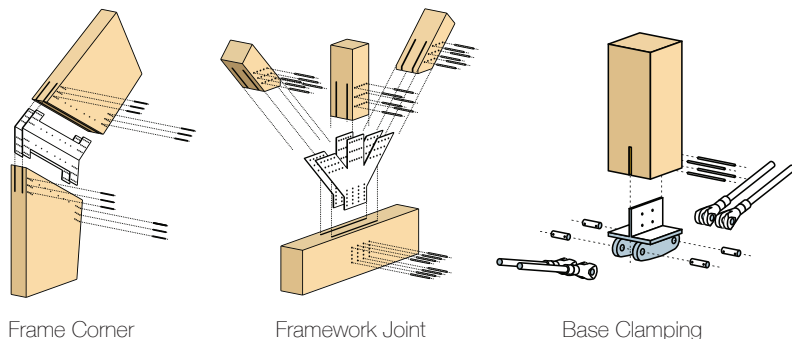


Flange head

Optimal
thread pitch
for faster
driving

Tip with
milling ribs
reduces the risk
of splitting the
wood





Heco® WS

Secures multiple shear steel-timber joints

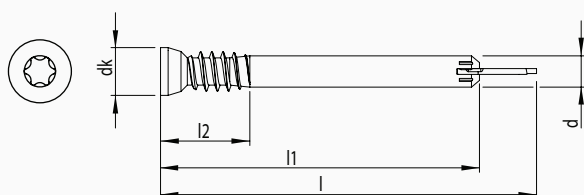
PRODUCT INFORMATION

- Easy to use without pre-drilling of steel or timbers
- Self drilling due to special drilling tip
- Can be used for many applications
- Simple, reliable calculation according to EN 1995-1-1
- High yield moment $M_{y,k} = 31,93 \text{ Nm}$
- Dismountable
- Fastening via the thread underneath the head
- High fire resistance
- Form-fitting direct fastening results in maximum fitting accuracy
- Aesthetically pleasing connection without destruction of the rear surface of the timber

Cylindrical countersunk head

Thread beneath the head

Surface bright zinc plated

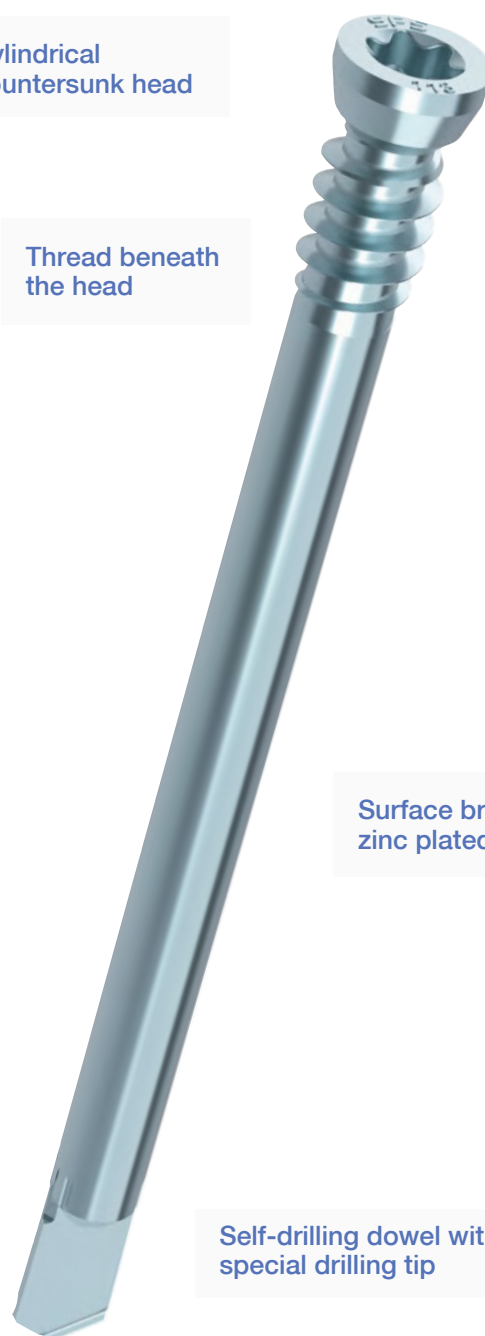


Diameter (d)	Length (l) Range: from - to	Drive	Head Diameter (dk)	CE
7mm	73mm - 233mm	T40	10mm	•

Manufactured in Germany, stocked and serviced in the UK for over 20 years



Self-drilling dowel with special drilling tip





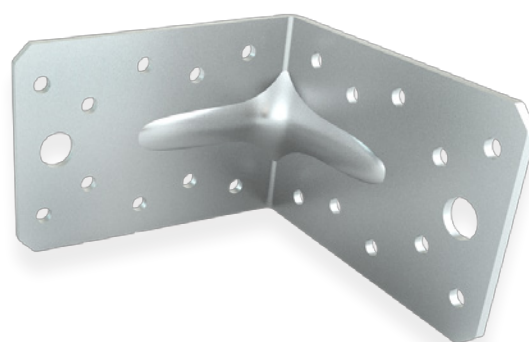
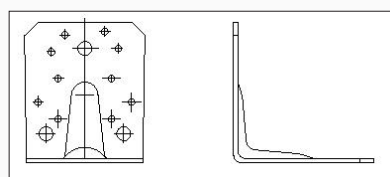
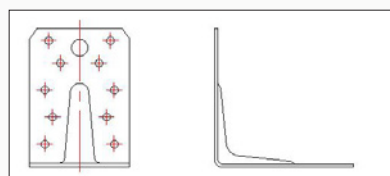
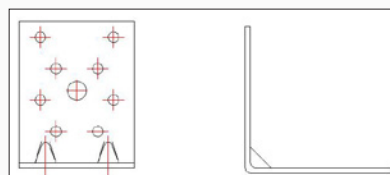
Prostruct[®] Structural Bracket

For wood to wood & wood to concrete connections in load bearing timber structures

PRODUCT INFORMATION

- 🔗 Reinforced profile with ribs
- 🔗 ETA approved, CE marked
- 🔗 Manufactured in Europe within ISO9001
- 🔗 For use with screws or ring shank nails
- 🔗 Pre galvanised steel to EN 10346:2009 DX51D Z275*
- 🔗 Range expansion ongoing, please ask for samples
- 🔗 Declaration of performance available on request

Height	Length	Width	Thickness	Holes	ETA
70mm	70mm	75mm	2.5mm	16 x 5mm , 2 x 9mm	•
90mm	90mm	65mm	2.5mm	20 x 5mm , 2 x 11mm	•
105mm	105mm	95mm	3mm	24 x 5mm , 4 x 11mm	•



Stocked & serviced in the UK





Pitzl® Advanced connection systems

Upcoming solutions for securing to insulated walls, acoustic/seismic protection & maximum torsional stiffness

Iso - Connect

- Connecting solutions for thermally insulated walls on wooden buildings
- Makes it possible to connect carports, french balconies and lightweight equipment to insulated timber buildings



GePi - Connect

- Sound and vibration reduction
- Wood to wood connections
- High wind loads, earthquake resistant (GePi 40)
- High strength against shear and tension forces
- Getzner Sylodyn® vibration suppression barrier in grades from 0.075 N/mm² to 6.0 N/mm²



PITZL- RIGID

- Standard torsionally rigid stiff-jointed framework
- Combination of the common HVP-connector and an optimally matched pull plate replaces the cappings of a carport construction with ease
- High torsion spring stiffness of almost 100 percent are possible



Stocked & serviced in the UK





Pitzl® Powerclamp II

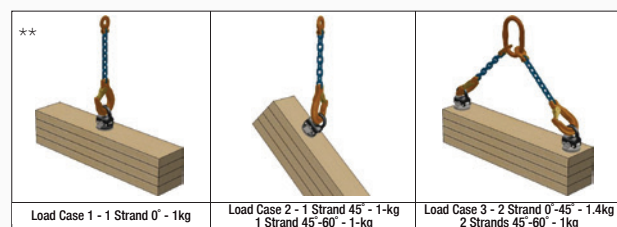
Lifting system for factory, offsite and onsite in dry conditions***

PRODUCT INFORMATION

- Enables you easily to raise wooden beams and edge glued panels through a simple and quick fastening of the lifting clamps
- Drill, apply, lift!
- Major time savings
- No other lifting gear needed
- No damage of wood surface
- No soiling
- Rated for up to 20,000 lifts per unit

SCOPE OF SUPPLY

2 sizes are available. Kit includes :
 2 x Powerclamps
 1 x Forstner drill bit
 1 x Heavy duty transport case



Version	Hole diameter	Working Length mm	Overall Length	Max load per unit*
D40/90	40mm	90mm	150mm	1000kg
D25/75	25mm	75mm		350kg

*Subject to adjustments, depending on anchoring point and configuration

**Multiple units can be used to increase lifting capacity, diagram shows D40/90 version

Stocked & serviced in the UK



Shortlisted in the Structural Timber Innovation Awards



***Powerclamp is intended for use in dry conditions with dry (max 20% residual humidity) wood. It should not be used where the bore is wet.

This product should be incorporated into your own risk assessment before use.



Rapid T-lift Anchor[®]

Fast and easy lifting of timber members both inside and out**

PRODUCT INFORMATION

- ⦿ For static and quasi static loading, dynamic loads require damping
- ⦿ Load suspension device made from high quality steel
- ⦿ Reliable lifting of timber , glulam or timber products
- ⦿ Can lift flat parts , bar shaped components or composite structures
- ⦿ Load capacity restricted by screw lengths
- ⦿ Only Rapid T-Lift screws M12 are allowed in the approval
- ⦿ Lifting anchors sold in pairs
- ⦿ T-lift screws sold in boxes of 30 and are not reusable

Diameter (d)	Length (l) Range: from - to	Drive	Head Diameter (dk)	ETA	Capacity Max **
12mm	120mm	T40/SW17	SW17mm	•	700kg
12mm	160mm	T40/SW17	SW17mm	•	1000kg
12mm	240mm - 600mm (on request)	T40/SW17	SW17mm	•	1300kg

**Loads must be reduced by hoisting angle and vibration coefficient



**This product should be incorporated into your own risk assessment before use.

Stocked & serviced in the UK





Pitzl® Wall Prop and Beam Puller

On site support and positioning equipment

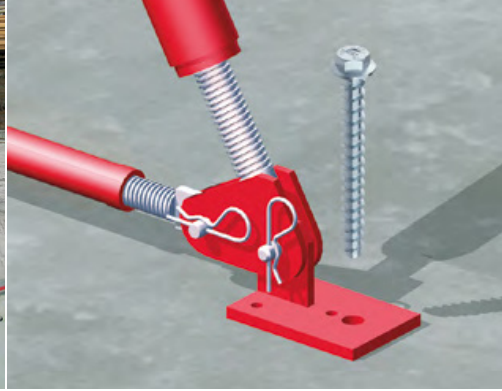
PRODUCT INFORMATION

- 🔗 A variety of wall supports and attachments
- 🔗 Beam puller with turn in adaptor allows almost unlimited configuration and fastening in all angles
- 🔗 Beam puller features bore holes to allow attachment to timber, steel and masonry
- 🔗 Reduction in damage to the timber and easy to use
- 🔗 Beam puller with special hooks reduce the damage to the timbers
- 🔗 Supplied in high quality transport case



Stocked & serviced in the UK



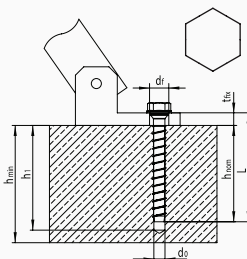


Multi Monti[®] Plus SSK

The reusable screw anchor for the temporary fixing of push-pull props in young concrete

PRODUCT INFORMATION

- ⊗ Temporary fastenings of site equipment for example props, push-pull props, guardrails or scaffolding
- ⊗ Dissassembling and reusability is permitted when using checking gauge
- ⊗ Approved for the use in young concrete with a compression strength of at least $f_{c,cube} > 10 \text{ N/mm}^2$
- ⊗ Clearance hole diameters from 17 – 23 mm in bracings can be covered with one screw
- ⊗ Settings can be carried out with machines as no defined installation torque is required
- ⊗ No expansion pressure
- ⊗ Safely applicable as no hidden mounting errors can occur
- ⊗ No plugs required, taps directly into substrate



Diameter (d)	Length (l) Range: from - to	Drive	Head Diameter (dk)	ETA
16mm	130mm	-	30mm	•

Manufactured in Germany,
stocked and serviced in
the UK for over 20 years



Head-marking MMS+
for easy identification
of the anchor even
after assembling

**Cone underneath
the head**
adapts to various
hole diameters

**Ideal core/
thread
geometry**
enables easy
insertion
and high load
capacities

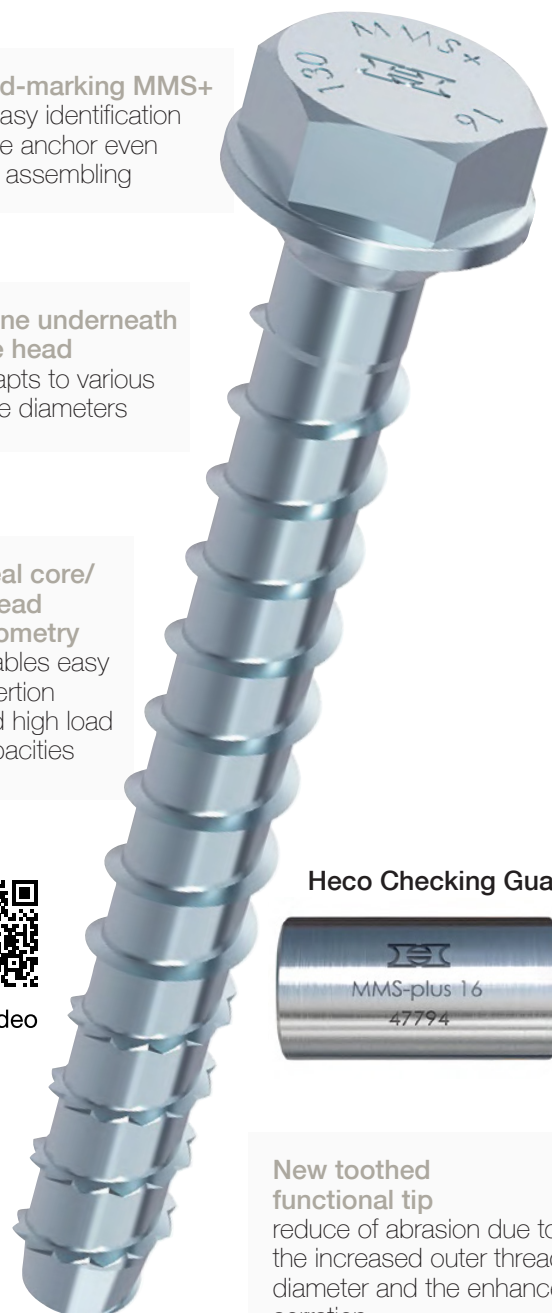


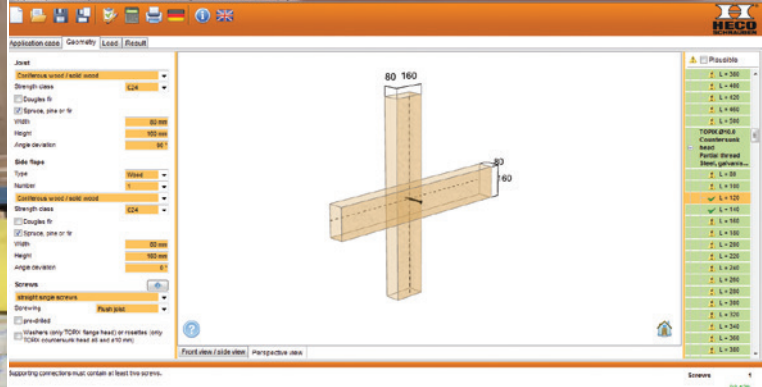
Video

Heco Checking Gauge



**New toothed
functional tip**
reduce of abrasion due to
the increased outer thread
diameter and the enhanced
serration





HECO® Design Support

HECO® Calculation software HCS

PRODUCT INFORMATION

- 🔗 Professional planning tool
- 🔗 Calculation of HECO® products
- 🔗 Tools:
 - Anchor design
 - Fixing for railing
 - On-rafter insulation
 - Lifting verification
 - Timber construction design
 - Façade, etc.
- 🔗 Easy handling
- 🔗 Printouts with installation drawings
- 🔗 HECO®-HCS is available as a free download or on a CD

Notes:

It is strongly recommended that HCS calculations are cross checked by a qualified engineer to ensure the data has been entered accurately and products selected correctly

Site and substrate conditions vary considerably and it is essential that these are evaluated by a local, qualified professional as Aptus Fasteners, Heco or Pitzl cannot be held responsible for incorrect use or selection of their products



Stocked & serviced in the UK





Aptus Site Support

150 years of combined experience to support your business



Colaboration - links with centres of excellence

We believe that knowledge of how a substrate performs is just as important as how the fixings perform. We have a long standing relationship with Edinburgh Napier University.



Cooperation - technical expertise when we need it

We have unlimited access to the laboratories and advanced testing equipment of our European partners.



Quality - internal diligence supported by extenal expertise

Our internal quality control is supported by independent experts in metrology and backed by our ISO approved suppliers.



Partnership - we can't do this alone

We draw on the knowledge, experience and facilities of our key suppliers in Germany & Switzerland, working closely with customers to solve their problems.



Technical approvals - calculation software available

We can supply calculation software for our structural ranges and offer DoP's on other items which are within scope of the Construction Products Regulations.



STRUCTURAL
TIMBER ASSOCIATION
Member