

HECO-UNIX®

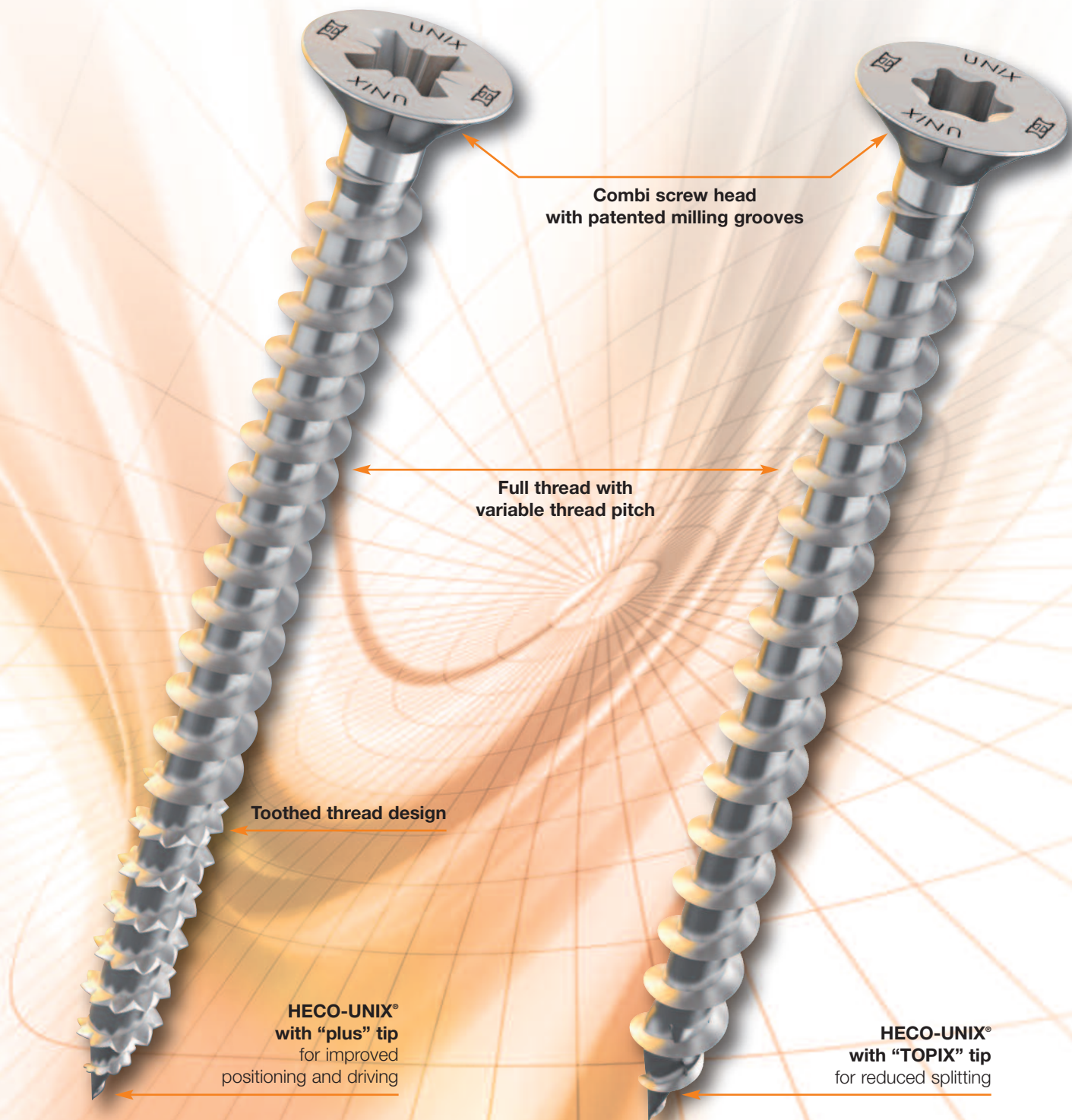
THE UNIQUE FULLY THREADED SCREW
WITH CONTRACTION EFFECT



Safe and secure

HECO-UNIX®-plus

HECO-UNIX®-top



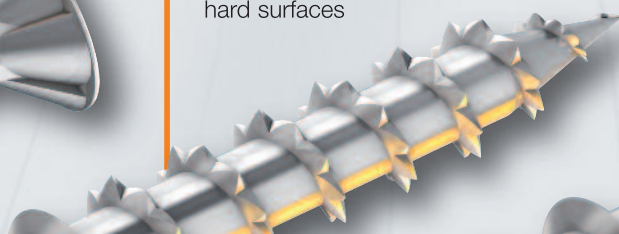
Combi screw head with milling grooves

- Milling grooves for easily driving the screw head into wood
- Precise fitting in 90° counterboring
- Extensive support in the metal fitting thanks to undercut thereby preventing surface damage



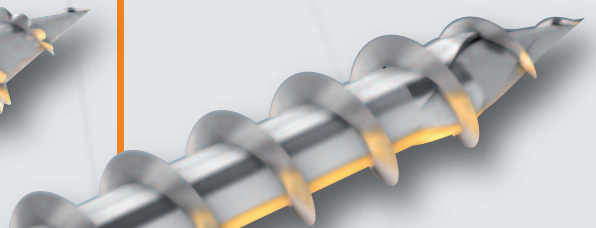
HECO-UNIX®-plus with "plus" tip

- For applications in nylon plugs, natural timber and manmade boards
- Outstanding pull out performance in plugs and timber
- Optimum pull-out and over-tightening properties in chipboard
- Swift positioning, especially on hard surfaces

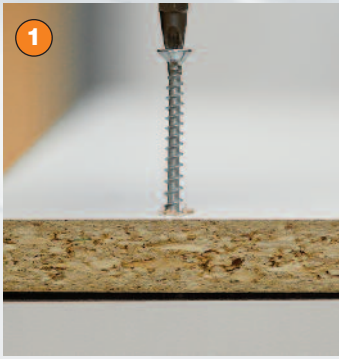


HECO-UNIX®-top with "TOPIX" tip

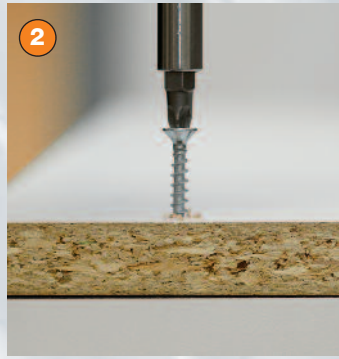
- For applications in natural timber and glulam
- Reduced risk of splitting the wood
- Faster driving thanks to higher thread pitch
- Swift positioning thanks to optimised tip geometry



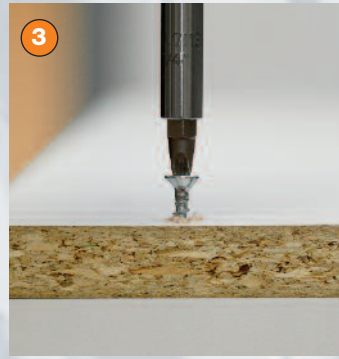
CONTRACTION EFFECT



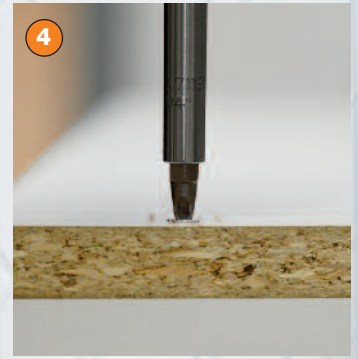
1
The gap is clearly visible when screwing into components



2
The variable section of the HECO-UNIX® full thread takes hold



3
Thanks to the smaller thread pitch, the components are already pulled together at this point



4
Countersinking the screw head for a neat finish

PRODUCT FEATURES

Patented combi screw head for mounting in fittings and on wood

- Precise fit in fittings
- Milled effect in wood thanks to milling grooves

Patented HECO-UNIX® full thread

- Contraction effect thanks to the full thread with variable pitch
- Tip variants with “plus” and “TOPIX” tip
- Full thread for sheet steel-wood and wood-wood connections
- The wood thread with variable pitch means that only one thread is cut into the wood



ADVANTAGES

Combi screw head

- No damage to the fitting surface
- Improved milling features in wood thanks to milling grooves

HECO-UNIX® full thread

- The HECO-UNIX® thread permits full and partial thread applications. This in turn permits smaller ranges
- Driving without gap, even in tough cases
- Fixing the wood components via the thread
- Higher loads are achievable as the head does not pull through the fixture if the fixture thickness is $> 4 \times d1$

The universal screw with contraction effect

The HECO-UNIX® has a full thread with variable pitch which steadily decreases in the centre section and is smaller at the rear thread range than at the tip of the screw.

Thanks to the variable thread pitch of the HECO-UNIX® screws the wooden components are pulled together as the screws are driven in. This permits the use of fully threaded screws without jiggling the wood components together. Assembly tasks can therefore be completed much more quickly.

Thanks to the full thread, components are also fixed in place axially. This prevents the negative effects of creeping and shrinking by wood when using part-thread screws.

Furthermore, panels are completely secured even before the head is countersunk leading to a neater finish. Deep countersinking is no longer necessary.



The HECO-UNIX® full thread with variable pitch pulls the components together. Deep countersinking of the screw head is no longer necessary.



When mounting thicker components the thread secures the joint rather than the head. This results in a significantly stronger connection allowing fewer fixings points or a safer fixing.



The combi screw head fits exactly into a 90° recess in the hardware. Thanks to the undercut milled grooves, the edge does not damage the coating on the hardware.



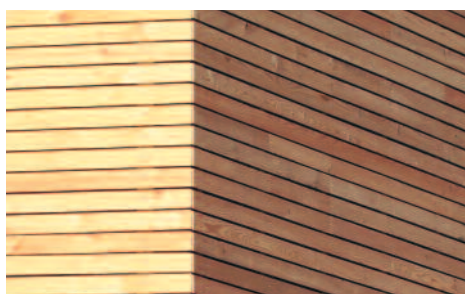
Wood frame construction



Securing fittings



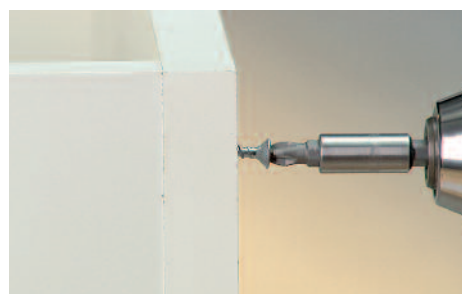
Boarding



Facade construction



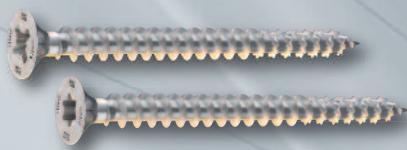
Counter battens



Carcass assembly for furniture and kitchens

RANGE OVERVIEW

HECO-UNIX®-plus



**Countersunk, full threaded
Screws longer 120 mm part threaded
zinc plated bright, coated**

PZD, lengths (mm): 12 to 200

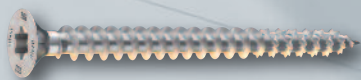
Diameters (mm): 3,5 / 4,0 / 4,5 / 5,0 / 6,0

T-Drive, lengths (mm): 12 to 200

Diameters (mm): 3,5 / 4,0 / 4,5 / 5,0 / 6,0



HECO-UNIX®-plus Wood panel screw



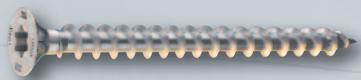
**Countersunk, full threaded
zinc plated bright, coated**

T-Drive, lengths (mm): 50 to 80

Diameter (mm): 4,5



HECO-UNIX®-top



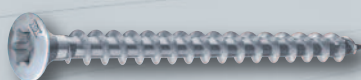
**Countersunk, full threaded
Screws longer 160 mm part threaded
zinc plated bright, coated**

T-Drive, lengths (mm): 20 to 300

Diameters (mm): 3,5 / 4,0 / 4,5 / 5,0 / 6,0



HECO-UNIX®-top Cladding screw



**Raised countersunk, full threaded
A2 stainless steel, coated**

T-Drive, lengths (mm): 40 to 80

Diameters (mm): 4,5 / 5,0



HECO-UNIX®-top Floorboard screw



**Raised countersunk head with milling ribs, full threaded
zinc plated bright, coated**

T-Drive, lengths (mm): 40 to 80

Diameters (mm): 3,5 / 4,0 / 4,5



HECO-Schrauben GmbH & Co. KG

Dr.-Kurt-Steim-Straße 28

D-78713 Schramberg

Tel.: +49 (0) 74 22 / 9 89-0

Fax: +49 (0) 74 22 / 9 89-200

E-mail: info@heco-schrauben.de

Internet: www.heco-schrauben.com

Your specialist dealer: