



PRODUCT OVERVIEW

Assortment

Page

General information

Pitzl - Innovative wood connection systems for the highest requirements.
Your strong partner for timber construction.

4

Post base systems

From carports to canopies.
The areas of application are versatile.

6

Connector systems

Everything for stairs, column-purlin connections, rigid frame corners and subsequent connections to thermally insulated timber facades.

11

Balcony & fence posts

Whether balcony, screen wall or fence. Everything from a single source.
The first balcony columns with ETA approval.

14

Tools

We offer the right tool for all products.
This allows us to make your workflow as simple as possible.

15

Sound insulation

Counteracting sound transmission in a targeted manner.
Quite simply with the Pitzl sound insulation concept.

18

Welcome to the world of Pitzl

As one of the leading suppliers of timber connection systems, Pitzl can look back on decades of experience. Starting out like many companies in a garage, the first post connectors, post supports and balcony columns were manufactured by the current senior partner almost 35 years ago.

„A suitable concept for every application“ is the credo at Pitzl.

In addition to our extensive range of stock items, we also produce custom-made products to meet your individual requirements. Our qualified specialists and modern production methods enable us to develop customized solutions that are perfectly tailored to your specific needs.

We understand the diversity of requirements in wood processing and are proud to offer our customers a wide range of high-quality wood joining systems that meet the highest quality standards.

Wood. Building material for the future

Wood is one of the oldest building materials known to mankind, but it is still highly topical, modern and versatile. Wood is not only ecological and healthy to live in, it also conveys a feeling of comfort more than any other building material.

Thanks to the possibilities of prefabrication, the costs of timber construction are comparatively low. The focus of production shifts from the building site to the workshop of a carpentry or prefabricated house manufacturer, where the elements can be produced with all the advantages of series production - a time and cost-saving process that does not have to be at the expense of individuality.

Furthermore, wood offers excellent load-bearing capacity. Modern technologies and engineering methods have significantly increased the strength of timber structures, so that even large buildings and bridges are now made from timber elements. This high load-bearing capacity combined with the lightness of wood enables the construction of large and stable structures.



Certified safety

At Pitzl, quality and safety are not left to chance. This is clearly demonstrated by the comprehensive product range for structural applications, which covers almost all eventualities and challenges and is backed up by comprehensive European Technical Approvals.

This commitment to the highest standards is the result of intensive development and testing work carried out by Pitzl in close cooperation with renowned, accredited institutions in Germany and Austria.



CE certification

By affixing the CE marking to its products, the manufacturer declares that all legal requirements for these products have been met. The aim of the CE marking is to document compliance with the essential safety requirements of the applicable EU regulations.



ETA approval

The ETA is a product performance certificate that leads to CE marking. An ETA can be applied for any construction product that is not or not fully covered by a harmonized standard. In order to guarantee our customers the highest safety standards, we have equipped almost all statically used products with one.



DIN 1090

Metal construction companies must comply with technical standards valid throughout Europe when carrying out welding work in the building inspection area. Contracts for metal construction work may only be awarded to specialist companies that meet the requirements of DIN EN 1090 and have been tested and certified by a recognized body.



A secure feeling

We ensure your safety and subject all products to numerous tests. Our products are then provided with an approval.

Pitzl has a clear unique selling point and offers users, planners, structural engineers and building owners maximum safety and comprehensive support.

PTP easy post bases plug-in system Z

Turn & click - the innovative post support system with centering point

With just a few simple steps, without time-consuming and laborious screwing, the plug-in system enables an efficient installation solution. The optimum material thickness of the post support ensures maximum load-bearing capacity for compressive, tensile and horizontal loads. Height adjustment is also possible when installed and under high loads.

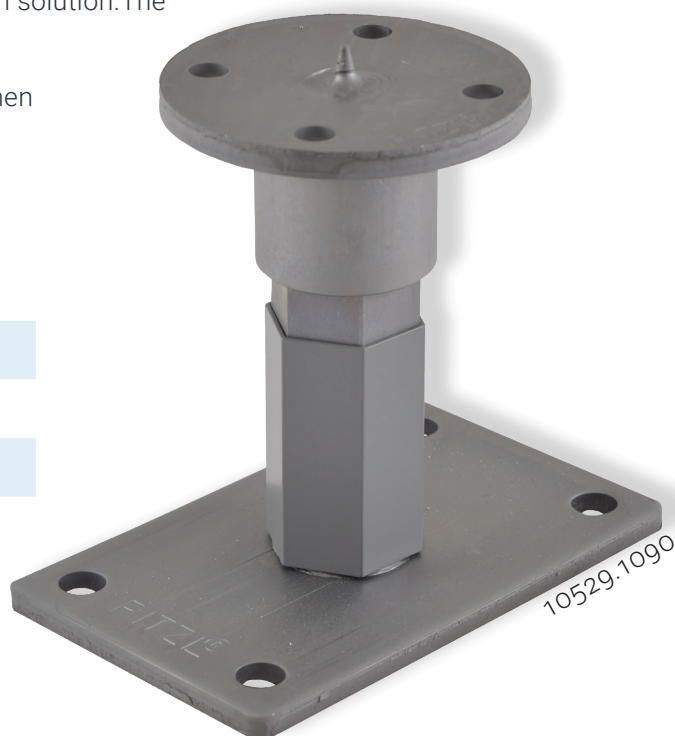
Informations:

Adjustment range (from/to)

99 mm - 418 mm

max. characteristic compressive load-bearing capacity Wood

Depending on post base dimensions up to 152,0 kN



PTP easy post bases system 10930

The post support system for simplified installation. The upper parts have a tube diameter of 42.4 mm, these are inserted into the wooden post and fastened with 4 wood screws $\varnothing 10 \times 120$ mm fully threaded.

This saves you valuable installation time and at the same time achieves the usual values for compressive, tensile and shear forces. The top section gives the post bases in the 10930 series an exceptionally large adjustment range. The series remains height-adjustable even when installed and under high loads.

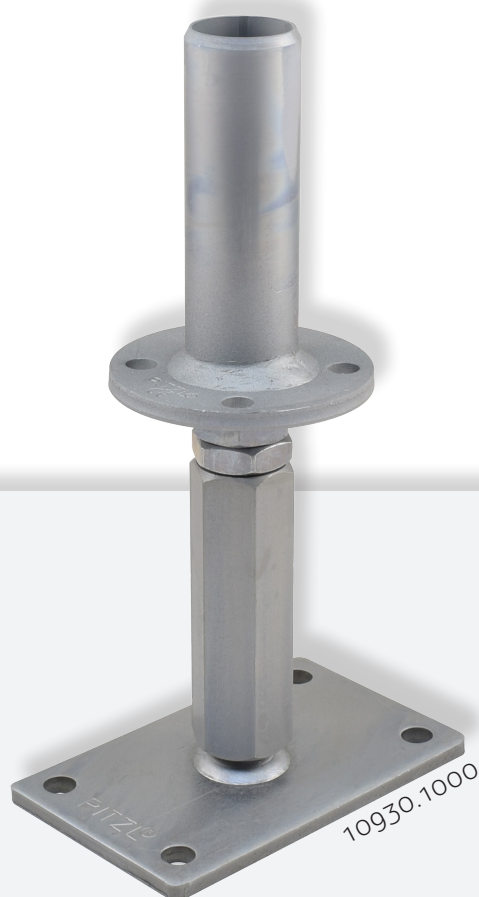
Informations:

Adjustment range (from/to)

110 mm - 420 mm

max. characteristic compressive load-bearing capacity Wood

Depending on post base dimensions up to 120,0 kN



PTP easy post bases right/left thread

A system for every application. Thread thicknesses from M20 to M24 and a wide range of plate sizes in material thicknesses from 6 mm to 15 mm offer the perfect solution for every application.

Lifting and lateral effects can be achieved using a straight screw connection or a mounting sword or side angle.

Height-adjustable when fully assembled, even under high loads.

Informations:

Adjustment range (from/to)

121 mm - 392 mm

max. characteristic compressive load-bearing capacity Wood

Depending on post base dimensions up to 177,0 kN



PTP easy post bases stainless steel V4A

A version with right/left thread system, in high-alloy form. This series is particularly resistant to corrosion. Ideal for use in environments with high humidity, salt water or other corrosive conditions, such as those that can occur near the sea.

V4A stainless steel is known for its high strength and durability. A post support made from this material can retain its structural integrity over a long period of time, which also results in a long service life.

Post supports with right/left-hand thread remain easily height-adjustable even under high loads.

Informations:

Adjustment range (from/to)

146 mm - 211 mm

max. characteristic compressive load-bearing capacity Wood

Depending on post base dimensions up to 170,0 kN



PTP plus post bases heavy-duty version

The optimally coordinated design enables very high characteristic load capacities of up to 515 kN in compression and for horizontal loads of up to 18.2 kN.

The tried and tested Pitzl screw connection concept or a sword with rod dowel hole guarantee a lift-off value of up to 50 kN.



Informations:

Adjustment range (from/to)

149 mm - 435 mm

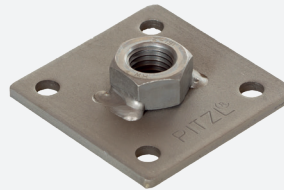
max. characteristic compressive load-bearing capacity Wood

Depending on post base dimensions up to 515,0 kN

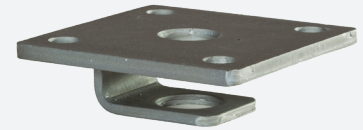
PTP easy post bases Threaded rods

For absorbing compressive, tensile and shear forces.

Optionally available with lift-off protection.
Welded adjusting nut or a locking tab on the top plate.



Welded adjusting nut
Labeling: xxxxx.xxx1



Locking tab
Labeling: xxxxx.xxx2

Informations:

Maximum thread length
500 mm
max. characteristic compressive load-bearing capacity Wood
Depending on post base dimensions up to 130,0 kN

PTP easy post bases rigid version

The post support series for simple installation.
Not height-adjustable, hot-dip galvanized.
Both plates are the same size

Versions with sword also available.



Informations:

Maximum height
200 mm
max. characteristic compressive load-bearing capacity Wood
Depending on post base dimensions up to 120,0 kN



With mounting sword 120 x 60 x 6 mm with two drill holes \varnothing 12.5 mm

11003.0000

PTP easy / plus post base fixed version for setting in concrete

Rigid design for setting in concrete. Post supports are hot-dip galvanized. Minimum anchoring in concrete: 150 mm.

Informations:

Maximum height
500 mm
max. characteristic compressive load-bearing capacity Wood
Depending on post base dimensions up to 96,0 kN



PTP easy / plus post bases for setting in concrete with tube / mandrel

The simple post support version for setting in concrete. Versions with tube or threaded mandrel available.

Minimum anchoring in concrete: 150 mm

Informations:

Maximum height
450 mm
max. characteristic compressive load-bearing capacity Wood
Depending on post base dimensions up to 138,0 kN

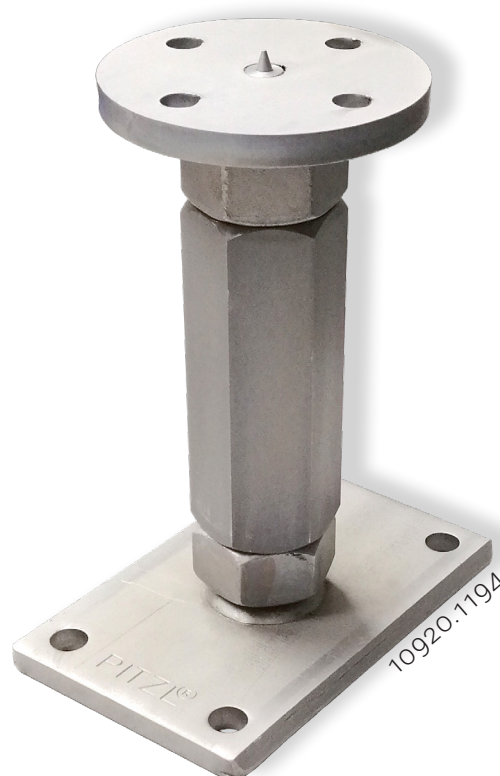


PTP Carport post bases

The ideal post support for carports or pergolas. Lock nuts on the top and base plates guarantee high rigidity. Deformations in horizontal directions are greatly reduced.

Informations:

Adjustment range (from/to)
190 mm - 502 mm
max. characteristic compressive load-bearing capacity Wood
Depending on post base dimensions up to 169,0 kN





HVP connector

Optimum edge distances and variable screw lengths guarantee accuracy of fit for every wood cross-section.

Optionally also available with lift-off protection.

Informations:

Required screw sizes (min. - max.)

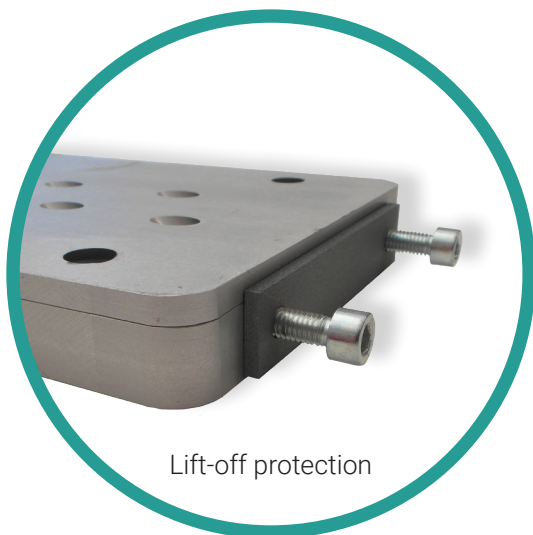
Depending on connector $\varnothing 4,5 \times 50 - 80$ mm or $\varnothing 5 \times 60 - 120$ mm

Max. characteristic load capacity in insertion direction

Depending on the screw length used, up to 124,22 kN

HVP heavy-duty connector

Heavy-duty connectors are automatically supplied with lift-off protection.
(incl. two screws $\varnothing 6 \times 20$ mm and lift-off protection plate)



Informations:

Required screw sizes (min. - max.)

$\varnothing 8 \times 80 - 240$

Max. characteristic load capacity in insertion direction

Depending on the screw length used, up to 509,07 kN

HVP double connector



Double holds more. More precisely, from 39.63 kN up to 727.24 kN. The double HVP connectors are automatically supplied with lift-off protection.

Informations:

Required screw sizes (min. - max.)

Depending on connector $\varnothing 5 \times 60 - 120$ or $\varnothing 8 \times 80 - 240$

Max. characteristic load capacity in insertion direction

Depending on the screw length used, up to 727,24 kN

HVP connector for steel or concrete connections

Strong and simple HVP connection to concrete and steel. An anchor plate fitted with concrete anchors ensures the force transfer into the concrete element. The secondary beam connection is made using a standard HVP connector part.

The load-bearing capacity of the concrete part (anchor and concrete) must be verified separately. HVP connectors with steel / concrete connection are automatically supplied with lift-off protection.

Informations:

Required screw sizes (min. - max.)

Depending on connector $\varnothing 5 \times 60 - 120$ or $\varnothing 8 \times 80 - 240$

Max. characteristic load capacity in insertion direction

Depending on the screw length used, up to 307 kN



SVP connector



Anodized step connector - Flexible connector for staircase construction. Elegant appearance and high load-bearing capacity values offer a clean and functional connection variant for precise and quick assembly of wooden stair treads.

Informations:

Rated value

Depending on step connector up to 11,5 kN



WVP connector

Looking at two points at the same time is always a challenge.

The unique geometry of Pitzl wall connectors makes it quick and easy to install your wall elements. Thanks to the extra-long threading path, the various fixing points no longer have to be positioned simultaneously, but conveniently one after the other.

Informations:

Max. characteristic load capacity in insertion direction

16,2 kN

CLT connector

The connector for force transmission in all directions on all panel levels. Thanks to the flexible application options, connections such as wall-wall, ceiling-ceiling, wall-ceiling and also corner connections can be made. Versatile in use with a top price-performance ratio.



Informations:

Connector length

375 mm variable

Clamping length

300 mm

SPP 80-connector

Post and purlin connectors - the optimum solution for tensile connections or combined stressed timber connections such as post and purlin connections. SPP is a retensionable timber connection that can be easily dismantled again.

Informations:

Minimum timber dimensions

90 x 90 mm

max. characteristic tensile load capacity

Depending on pane up to 62,5 kN



BSP Balcony columns C-profile hot-dip galvanized with CE

Maximum safety thanks to the development of a special C-profile. High production quality in-house and in the approval process of the Institute for Construction and Materials Science at the University of Innsbruck (Department of Timber Construction).

High-quality hot-dip galvanizing guarantees a perfect appearance and the necessary corrosion protection, even in service class 3.

Informations:

Height C-profile

1000 mm or 1200 mm

Assembly information

3 holes are provided for the crossbar fastening



GSP Railing supports T-iron hot-dip galvanized

T-beams, also known as T-beams or T-profiles, are often used in balcony and fence construction. These profiles are characterized by their T-shaped cross-section, which ensures a high load-bearing capacity and stability.

In connection with balcony construction, T-beams are often used as a supporting structure for balcony railings or supports.

Informations:

Height

300 mm

max. characteristic tensile load capacity

3 holes are provided for the crossbar fastening





Lifting clamp PowerClamp

The lifting clamp. An absolute must for timber construction. Gentle lifting of wooden beams and glulam panels is made possible by the quick and easy attachment of the lifting clamp.

Depending on the requirements, the D40/90 lifting clamp is suitable for a load capacity of up to 1500 kg and the D25/70 lifting clamp for a load capacity of up to 500 kg. Available both individually and as a set.



Informations:

max. load capacity

Depending on lifting clamp 500 Kg or 1.500 Kg

Weight per clamp

Depending on lifting clamp 1,0 Kg or 1,8 Kg

Beam hoists with swivel adapters or hooks make work easier thanks to their versatility and adaptability to different loads. They enable efficient lifting and moving, increase safety by reliably attaching the load and reduce the physical strain on the user.

Traverse hoists are available in a version with a reversible adapter and in a version with a hook.

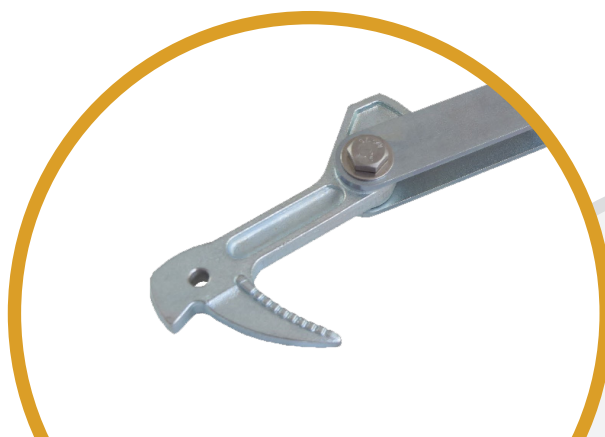
Informations:

Span

Depending on beam tension version 460 - 720 mm

Max. tensile load

20 kN



Version with hook
55851.0000

Wall supports

3-part, galvanized. Tube 45 x 45 mm.
Fine adjustment via left/right thread.
Also available with variable spacer.

Informations:

Adjustment range

1600 - 4200 mm

Weight

Depending on wall support version 12,5 Kg or 18,2 Kg



Suitable for this:

Wall support lifting frame.
55651.0000

For easy and safe safe
transportation of
wall supports.



Drills and countersinks

The range also includes drill bits and countersinks for the correct installation of post bases or connectors.

Also available as a set.



Informations:

max. revolutions per minute

1800

Effective length

Depending on drill version max. 85 mm - 140 mm

Milling and assembly templates

Milling and assembly templates for all HVP series connectors with widths of 25 - 140 mm. The flexible and easily adjustable templates allow quick adjustment of the connector width.

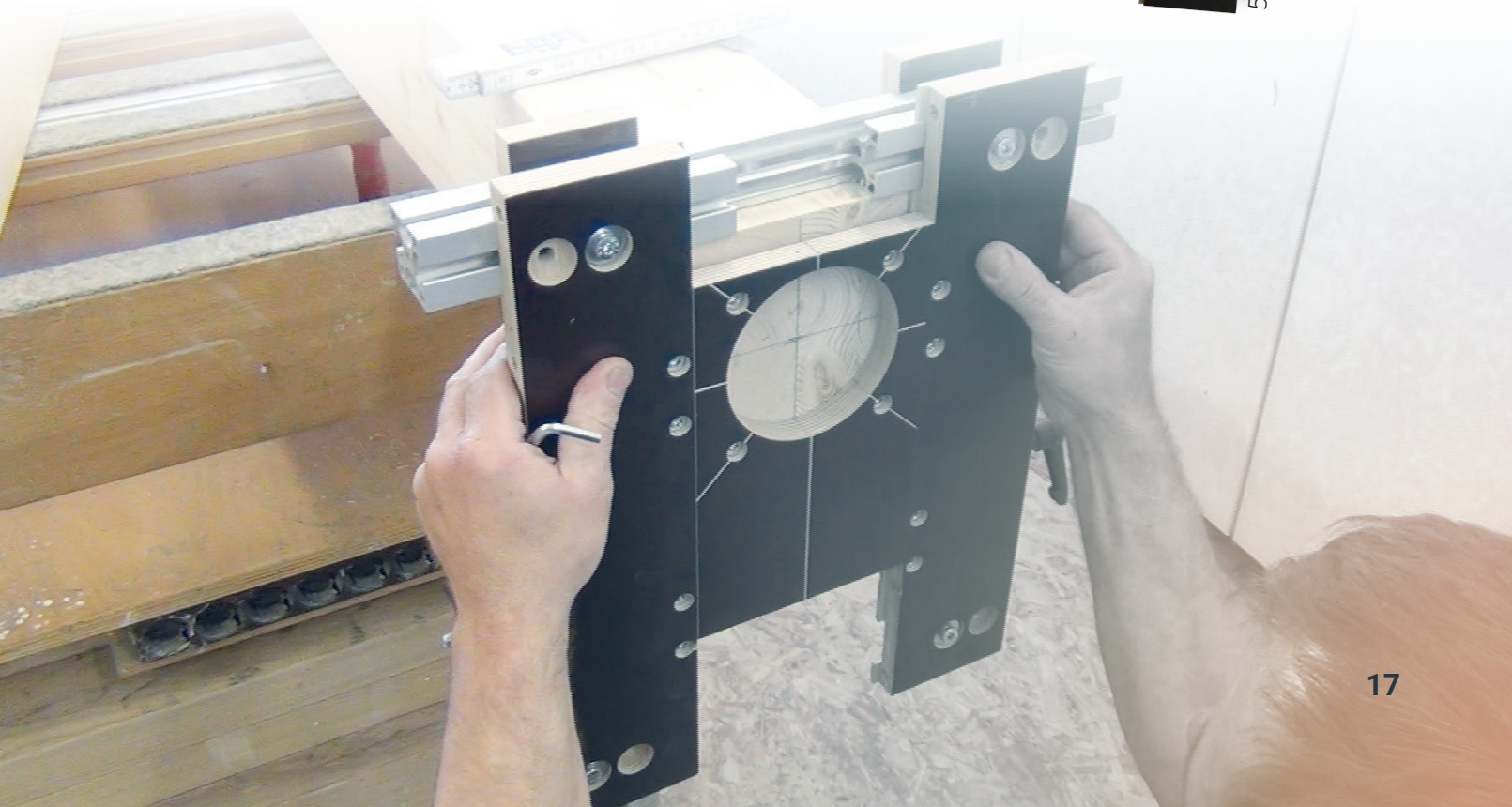
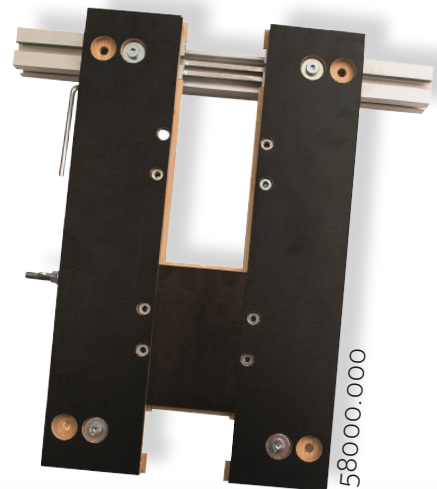
Informations:

For connector widths

25 mm - 140

For connector sizes

Article-series: 88004.0000 - 88560.0000



Soundproofing bracket with power

Sound insulation brackets offer impressive resistance to shear and tensile forces, making them a reliable choice for a wide range of applications. Thanks to their sound-bridging connection, they also help to effectively minimize unwanted noise. They therefore not only offer safety for planners, but also for end users.

Pitzl sound insulation brackets not only ensure structural integrity, but also achieve optimum acoustics in the rooms.

Informations:

Characteristic load-bearing capacities $F_{4/5,k}$

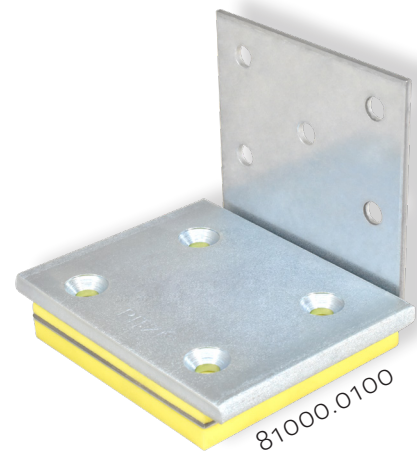
Depending on connector up to 55 kN

Characteristic load-bearing capacities $F_{2/3,k}$

Depending on connector up to 62 kN

Characteristic load-bearing capacities $F_{1,k}$

Depending on connector up to 54 kN



What is GePi?

The GePi articles are based on realizing the force transmission via the pressure plate without transmitting the sound via the connecting elements. This is achieved by integrating generously dimensioned through-holes in the leg of the carrier, which not only optimize force transmission but also enable innovative sound insulation. The decoupling provided by Sylodyn technology also plays a decisive role.

Regardless of the challenges of your construction projects, Pitzl sound insulation brackets offer unrivaled strength and safety. GePi brackets are designed to withstand high shear and tensile forces with ease. Astonishing test results from TVFA-Innsbruck confirm that the GePi 240 bracket can withstand shear forces of up to 60 kN without any problems. An additional safety feature is the earthquake-proof design, which can provide maximum protection even under seismic loads. The GePi 240 bracket therefore guarantees reliable shear force dissipation even under the most adverse conditions such as earthquakes.

Sylodyn® sound insulation pads

Counteract sound transmission in a targeted manner. Getzner's many years of experience with vibration insulation in the railroad, construction and industrial sectors enable users to meet the high structural requirements in buildings.

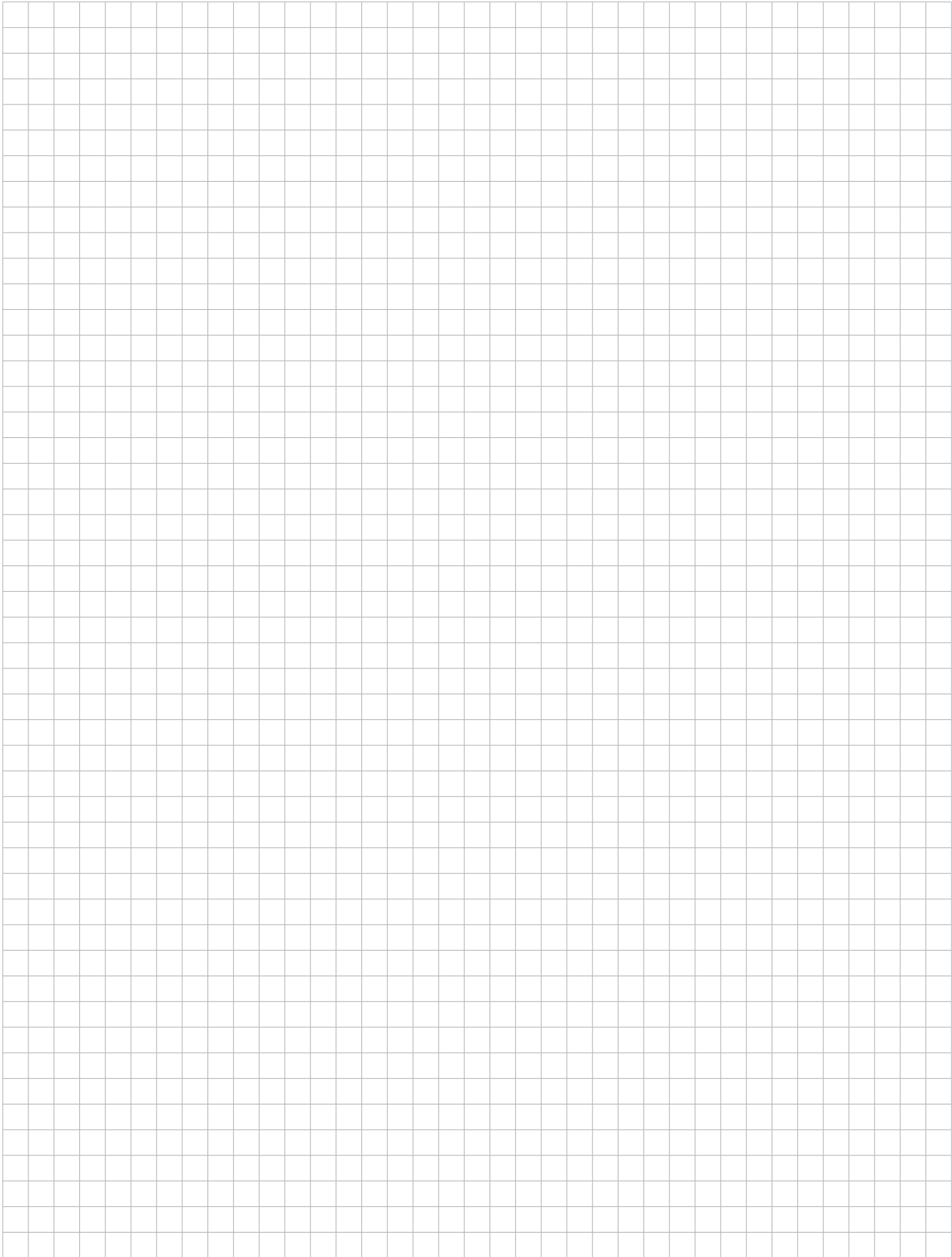
The strips are 6.25 mm, 12.5 mm or 25 mm thick, depending on requirements, and are manufactured in the required dimensions according to customer specifications. They are available in various stiffnesses and are installed between the wall and ceiling. Stiffer Sylodyn types can also be offered for components subject to particularly high loads and high pressures.

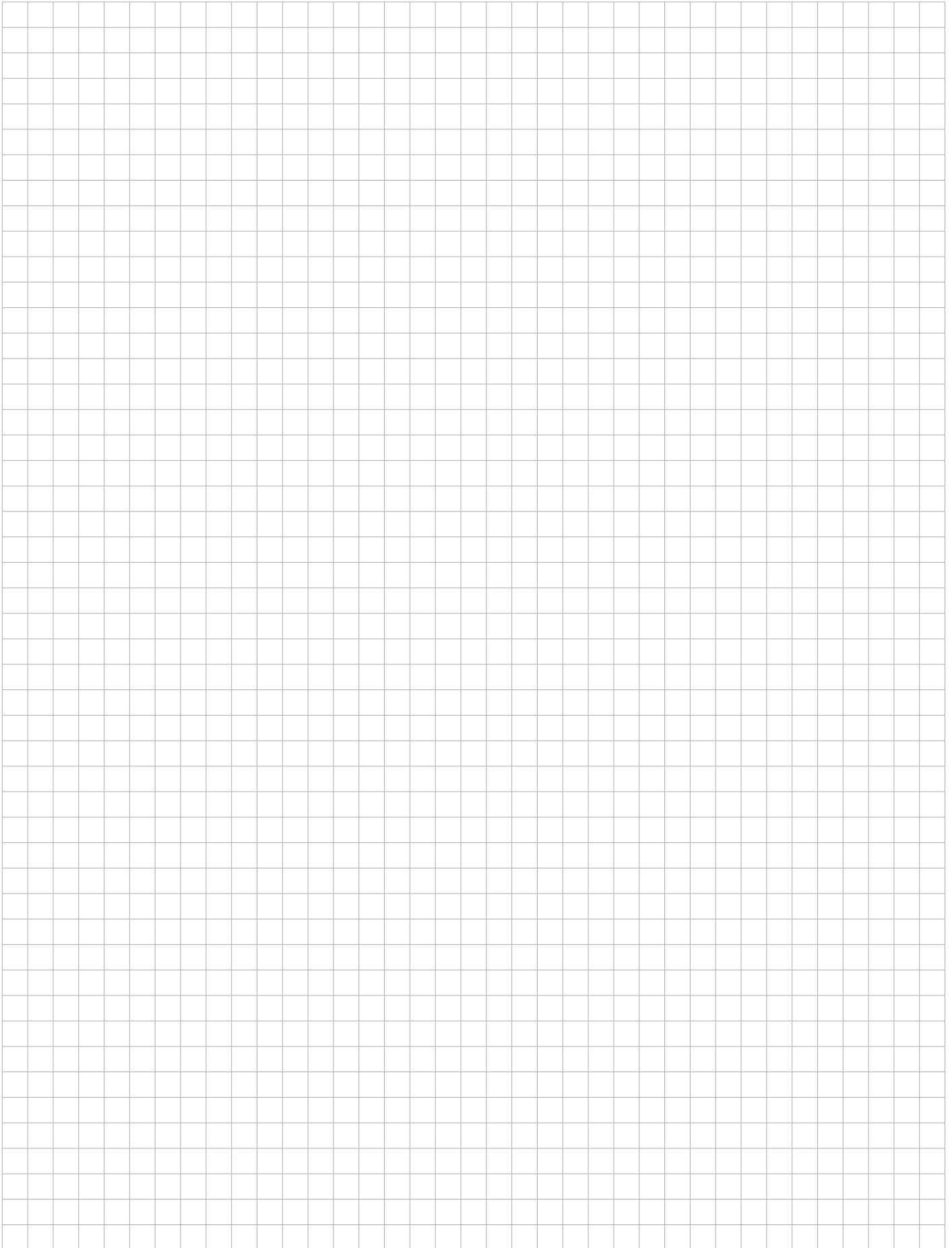
Closed-cell PUR elastomer (Polyurethan)

Art.-Nr.	Designation	Static application range ¹ in N/mm ²	Load peaks ¹ in N/mm ²
81100	NB	0,075	2,00
81200	NC	0,150	3,00
81300	ND	0,350	4,00
81400	NE	0,750	6,00
81500	NF	1,500	8,00
81601	HRB HS 3000	3,000	12,00
81602	HRB HS 6000	6,000	18,00
81600	HRB HS 12000	12,000	24,00



Notes





Imprint

Pitzl Metallbau GmbH & Co. KG
Siemensstr. 26
84051 Altheim
Germany



Phone.: +49 (0) 8703 / 9346-0
Fax: +49 (0) 8703 / 9346-55

info@pitzl-connectors.com
www.pitzl-connectors.com

CEO: Anna Pitzl, Thomas Pitzl
USt-IdNr.: DE814783594

Copyright

All rights reserved. Reprinting and publication - even in extracts - only with the permission of Pitzl Metallbau GmbH & Co. KG and with exact indication of the source.

Errors and omissions excepted.
Illustrations similar.
Edition 01/2024



Innovative wood connection systems
for highest requirements

We recommend our sales partner:

PITZL METALLBAU GMBH & CO. KG
SIEMENSSTRASSE 26
D-84051 ALTHEIM
GERMANY

PHONE: +49 (0) 8703 / 9346-0
MAIL: INFO@PITZL-CONNECTORS.COM

WWW.PITZL-CONNECTORS.COM